

DUSP6 antibody

Cat. No. GTX19115

Host	Chicken
Clonality	Polyclonal
Isotype	IgY
Applications	WB
Reactivity	Human, Mouse, Rat

References (1)
 Package
 50 µg

Applications

Application Note

*Optimal dilutions/concentrations should be determined by the researcher.

Suggested dilution	Recommended dilution
WB	Assay dependent
Not tested in other applications.	

Calculated MW 42 kDa. ([Note](#))

Properties

Form	Liquid
Buffer	PBS
Preservative	0.02% Sodium azide
Storage	Store as concentrated solution. Centrifuge briefly prior to opening vial. For short-term storage (1-2 weeks), store at 4°C. For long-term storage, aliquot and store at -20°C or below. Avoid multiple freeze-thaw cycles.
Concentration	Batch dependent (Please refer to the vial label for the specific concentration.)
Immunogen	Immunogen Sequence: GI # 4503419, sequence 135-280 Recombinant dual specificity phosphatase 6 isoform a
Purification	Purified by affinity chromatography
Conjugation	Unconjugated

Note

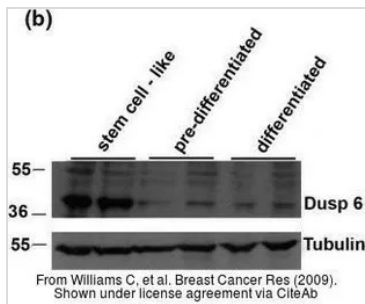
For laboratory research use only. Not for any clinical, therapeutic, or diagnostic use in humans or animals. Not for animal or human consumption.

Purchasers shall not, and agree not to enable third parties to, analyze, copy, reverse engineer or otherwise attempt to determine the structure or sequence of the product.



For full product information, images and publications, please visit our [website](#).

DATA IMAGES



GTx19115 WB Image

The data was published in the journal Breast Cancer Res in 2009. [PMID: 19426500](https://pubmed.ncbi.nlm.nih.gov/19426500/)



For full product information, images and publications, please visit our [website](https://www.genetex.com).