

PKA C alpha antibody

Cat. No. GTX19242

Host	Rabbit
Clonality	Polyclonal
Isotype	IgG
Applications	WB, IP
Reactivity	Human, Mouse, Rat, Bovine

Package
100 µg

Applications

Application Note

*Optimal dilutions/concentrations should be determined by the researcher.

Suggested dilution	Recommended dilution
WB	0.5-4 µg/ml
IP	20-30 µg/ml

Not tested in other applications.

Calculated MW 40.59 kDa. ([Note](#))

Properties

Form	Liquid
Buffer	PBS pH7.2, 30% Glycerol, 0.5% BSA
Preservative	0.01% Thimerosal
Storage	Store as concentrated solution. Centrifuge briefly prior to opening vial. For short-term storage (1-2 weeks), store at 4°C. For long-term storage, aliquot and store at -20°C or below. Avoid multiple freeze-thaw cycles.
Concentration	0.5 mg/ml (Please refer to the vial label for the specific concentration.)
Immunogen	Synthetic peptide surrounding amino acid 11 of the catalytic subunit of human PKA alpha isoform
Purification	Purified by affinity chromatography
Conjugation	Unconjugated

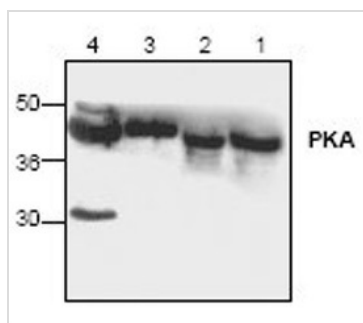
Note

For laboratory research use only. Not for any clinical, therapeutic, or diagnostic use in humans or animals. Not for animal or human consumption.

Purchasers shall not, and agree not to enable third parties to, analyze, copy, reverse engineer or otherwise attempt to determine the structure or sequence of the product.



For full product information, images and publications, please visit our [website](#).

DATA IMAGES

GTX19242 WB Image

WB analysis of Jurkat cells (Lane 1 & 2), mouse small intestine (Lane 3), and rat kidney (Lane 4) lysates using GTX19242 PKA C alpha antibody.



For full product information, images and publications, please visit our [website](#).