

Ubiquitin antibody

Cat. No. GTX19247

Host	Rabbit
Clonality	Polyclonal
Isotype	IgG
Applications	WB, ICC/IF, IHC
Reactivity	Species independent

References (5)

Package

100 µl

Applications

Application Note

*Optimal dilutions/concentrations should be determined by the researcher.

Suggested dilution	Recommended dilution
WB	1-5µg/ml
ICC/IF	Assay dependent
IHC	1-10µg/ml

Not tested in other applications.

Calculated MW 34 kDa. ([Note](#))

Product Note This antibody recognizes free ubiquitin as well as ubiquitinated proteins in immunoblots.

Properties

Form	Liquid
Buffer	PBS, 50% Glycerol
Preservative	0.09% Sodium azide
Storage	Store as concentrated solution. Centrifuge briefly prior to opening vial. For short-term storage (1-2 weeks), store at 4°C. For long-term storage, aliquot and store at -20°C or below. Avoid multiple freeze-thaw cycles.
Concentration	Batch dependent (Please refer to the vial label for the specific concentration.)
Immunogen	Native bovine ubiquitin conjugated to KLH.
Purification	Protein A purified
Conjugation	Unconjugated



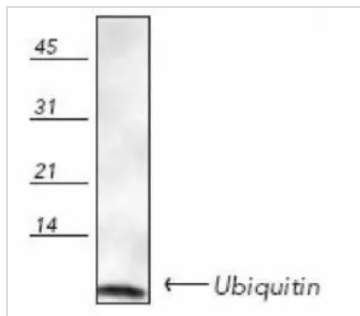
For full product information, images and publications, please visit our [website](#).

For laboratory research use only. Not for any clinical, therapeutic, or diagnostic use in humans or animals. Not for animal or human consumption.

Note

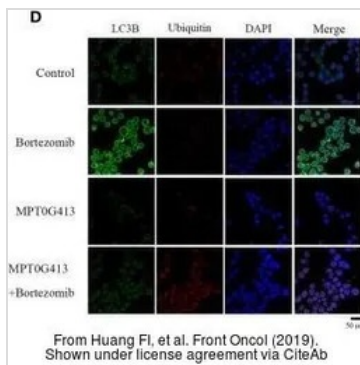
Purchasers shall not, and agree not to enable third parties to, analyze, copy, reverse engineer or otherwise attempt to determine the structure or sequence of the product.

DATA IMAGES



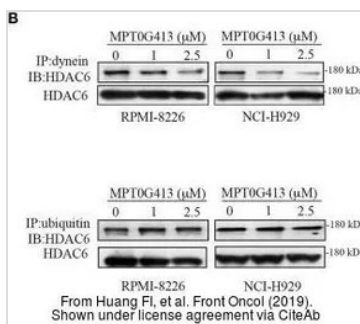
GTx19247 WB Image

WB analysis of human brain cortex (senile plaque) tissue lysate using GTx19247 Ubiquitin antibody.



GTx19247 ICC/IF Image

The data was published in the journal Front Oncol in 2019. [PMID: 31024851](https://pubmed.ncbi.nlm.nih.gov/31024851/)



GTx19247 WB Image

The data was published in the journal Front Oncol in 2019. [PMID: 31024851](https://pubmed.ncbi.nlm.nih.gov/31024851/)



For full product information, images and publications, please visit our [website](https://www.genetex.com).