

## LAMP1 antibody

Cat. No. GTX19294

Host	Rabbit
Clonality	Polyclonal
Isotype	IgG
Applications	WB
Reactivity	Human, Mouse

References ( 3 )

Package

100 µg

## Applications

## Application Note

\*Optimal dilutions/concentrations should be determined by the researcher.

Suggested dilution	Recommended dilution
WB	1:250 - 1:1000

Not tested in other applications.

Calculated MW	45 kDa. ( <a href="#">Note</a> )
---------------	----------------------------------

Product Note	In immunofluorescence procedures, this antibody stains Lamp1 in HeLa cells resulting in perinuclear staining.
--------------	---

## Properties

Form	Liquid
Buffer	20mM Tris, 100mM Glycine
Preservative	0.1% Sodium azide
Storage	Store as concentrated solution. Centrifuge briefly prior to opening vial. For short-term storage (1-2 weeks), store at 4°C. For long-term storage, aliquot and store at -20°C or below. Avoid multiple freeze-thaw cycles.
Concentration	1 mg/ml (Please refer to the vial label for the specific concentration.)
Immunogen	Synthetic peptide corresponding to residues C K(407) R S H A G Y Q T I(416) of human LAMP1.
Purification	Purified by affinity chromatography
Conjugation	Unconjugated

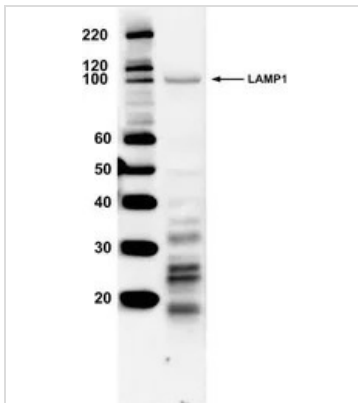
## Note

For laboratory research use only. Not for any clinical, therapeutic, or diagnostic use in humans or animals. Not for animal or human consumption.

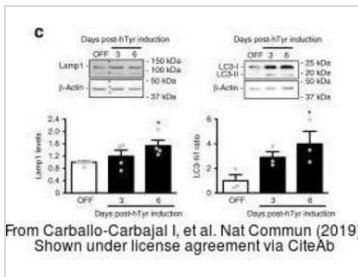
Purchasers shall not, and agree not to enable third parties to, analyze, copy, reverse engineer or otherwise attempt to determine the structure or sequence of the product.



For full product information, images and publications, please visit our [website](#).

**DATA IMAGES**

**GTx19294 WB Image**

WB analysis of 20 µg of HeLa cell lysate using GTx19294 LAMP1 antibody.  
Dilution : 1:500


**GTx19294 WB Image**

The data was published in the journal Nat Commun in 2019. [PMID: 30846695](https://pubmed.ncbi.nlm.nih.gov/30846695/)



For full product information, images and publications, please visit our [website](https://www.genetex.com).