

c-Myc antibody (HRP)

Cat. No. GTX19312

Host	Rabbit
Clonality	Polyclonal
Isotype	IgG
Application	WB, ICC/IF, ELISA, IHC
Reactivity	Human

Reference (1)
Package
100 µg

APPLICATION

Application Note

*Optimal dilutions/concentrations should be determined by the researcher.

Suggested dilution	Recommended dilution
WB	1:1,000- 1:30,000
ICC/IF	1:200-1:500
ELISA	1:10,000- 1:100,000
IHC	Assay dependent

Not tested in other applications.

Calculated MW 49 kDa. ([Note](#))

PROPERTIES

Form	Liquid
Buffer	PBS, 0.2% BSA
Preservative	0.1% ProClin 400
Storage	Store as concentrated solution. Centrifuge briefly prior to opening vial. Store at 4°C.
Concentration	1 mg/ml (Please refer to the vial label for the specific concentration.)
Immunogen	Amino acids 410-419 (EQKLISEEDL) of human myc conjugated to KLH.
Purification	Purified by antigen-affinity chromatography
Conjugation	Horseradish peroxidase(HRP) Ratio : 4 HRP molecules per IgG molecule.

Note

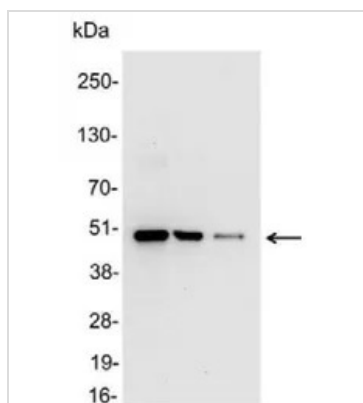
For laboratory research use only. Not for any clinical, therapeutic, or diagnostic use in humans or animals. Not for animal or human consumption.

Purchasers shall not, and agree not to enable third parties to, analyze, copy, reverse engineer or otherwise attempt to determine the structure or sequence of the product.



For full product information, images and publications, please visit our [website](#).

DATA IMAGES



GTX19312 WB Image

WB analysis of 200, 100, and 50ng of E. coli lysate containing tagged fusion protein using GTX19312 c-Myc antibody (HRP).

Dilution : 1:25000



For full product information, images and publications, please visit our [website](#).