

Src antibody [184Q20]

Cat. No. GTX19336

| | |
|---------------------|-----------------------|
| Host | Mouse |
| Clonality | Monoclonal |
| Isotype | IgG1 |
| Applications | WB, ICC/IF, IHC-P, IP |
| Reactivity | Human, Mouse, Rat |

Package
50 µg

Applications

Application Note

*Optimal dilutions/concentrations should be determined by the researcher.

| Suggested dilution | Recommended dilution |
|--------------------|----------------------|
| WB | 1-3 µg/ml |
| ICC/IF | Assay dependent |
| IHC-P | 1:20-1:200 |
| IP | Assay dependent |

Not tested in other applications.

Calculated MW 60 kDa. ([Note](#))

Properties

| | |
|----------------------|--|
| Form | Liquid |
| Buffer | PBS, 1% BSA |
| Preservative | 0.1% Sodium azide |
| Storage | Store as concentrated solution. Centrifuge briefly prior to opening vial. For short-term storage (1-2 weeks), store at 4°C. For long-term storage, aliquot and store at -20°C or below. Avoid multiple freeze-thaw cycles. |
| Concentration | 0.5 mg/ml (Please refer to the vial label for the specific concentration.) |
| Immunogen | Recombinant human c-Src expressed in E. coli. |
| Purification | Purified by affinity chromatography |
| Conjugation | Unconjugated |

Note

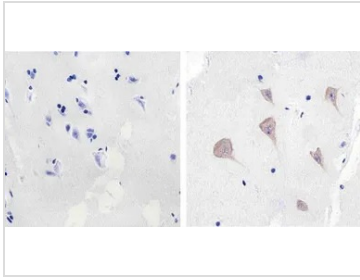
For laboratory research use only. Not for any clinical, therapeutic, or diagnostic use in humans or animals. Not for animal or human consumption.

Purchasers shall not, and agree not to enable third parties to, analyze, copy, reverse engineer or otherwise attempt to determine the structure or sequence of the product.



For full product information, images and publications, please visit our [website](#).

DATA IMAGES

**GTX19336 IHC-P Image**

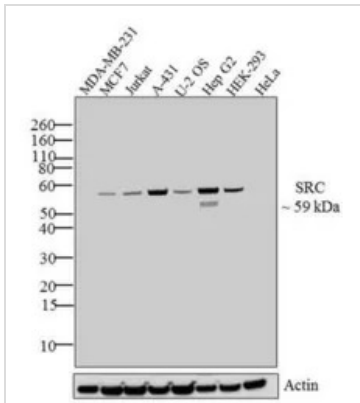
IHC-P analysis of human brain tissue using GTX19336 Src antibody [184Q20].

Right : Primary antibody

Left : Negative control without primary antibody

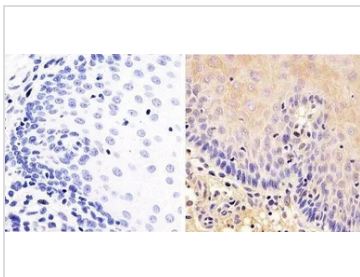
Antigen retrieval : 10mM sodium citrate (pH 6.0), microwaved for 8-15 min

Dilution : 1:100

**GTX19336 WB Image**

WB analysis of 30 µg of MDA-MB-231 (lane1), MCF 7 (lane2), Jurkat (lane3), A431 (lane4), U2OS (lane5), Hep G2 (lane 6), HEK-293 (lane 7) and HeLa (lane 8) cell lysate using GTX19336 Src antibody [184Q20].

Dilution : 1-3 µg/ml

**GTX19336 IHC-P Image**

IHC-P analysis of human esophagus tissue using GTX19336 Src antibody [184Q20].

Right : Primary antibody

Left : Negative control without primary antibody

Antigen retrieval : 10mM sodium citrate (pH 6.0), microwaved for 8-15 min

Dilution : 1:100



For full product information, images and publications, please visit our [website](https://www.genetex.com).