

N-Cadherin antibody [8C11]

Cat. No. GTX19348

Host	Mouse
Clonality	Monoclonal
Isotype	IgG1
Applications	WB, ICC/IF, IHC-P, IP
Reactivity	Human, Mouse, Rabbit, Hamster, Avian

Package
100 µg

Applications

Application Note

*Optimal dilutions/concentrations should be determined by the researcher.

Suggested dilution	Recommended dilution
WB	1:1000
ICC/IF	1:50-1:200
IHC-P	1:20
IP	5 µg

Not tested in other applications.

Calculated MW	100 kDa. (Note)
Product Note	This antibody is not suitable for frozen tissues in immunohistochemistry applications.

Properties

Form	Liquid
Buffer	PBS, 0.1% BSA
Preservative	0.05% Sodium azide
Storage	Store as concentrated solution. Centrifuge briefly prior to opening vial. For short-term storage (1-2 weeks), store at 4°C. For long-term storage, aliquot and store at -20°C or below. Avoid multiple freeze-thaw cycles.
Concentration	1 mg/ml (Please refer to the vial label for the specific concentration.)
Immunogen	Bacterial fusion protein corresponding to the extracellular domain of N-cadherin.
Purification	Protein G purified
Conjugation	Unconjugated

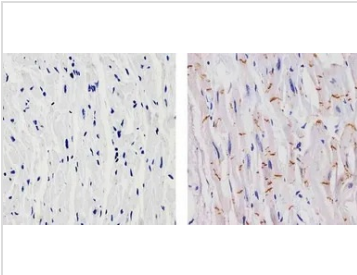
For full product information, images and publications, please visit our [website](#).

For laboratory research use only. Not for any clinical, therapeutic, or diagnostic use in humans or animals. Not for animal or human consumption.

Note

Purchasers shall not, and agree not to enable third parties to, analyze, copy, reverse engineer or otherwise attempt to determine the structure or sequence of the product.

DATA IMAGES



GTX19348 IHC-P Image

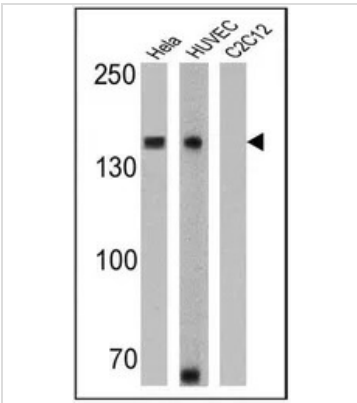
IHC-P analysis of human heart tissue using GTX19348 N-Cadherin antibody [8C11].

Right : Primary antibody

Left : Negative control without primary antibody

Antigen retrieval : 10mM sodium citrate (pH 6.0), microwaved for 8-15 min

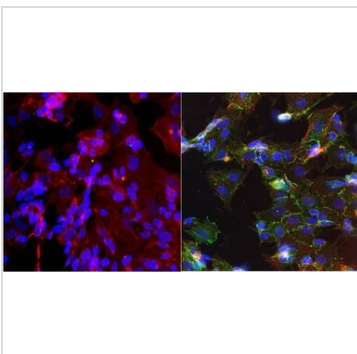
Dilution : 1:20



GTX19348 WB Image

WB analysis of 25 ug of HeLa (Lane 1), HUVEC (Lane 2), and C2C12 cell lysates (Lane 3) using GTX19348 N-Cadherin antibody [8C11].

Dilution : 1:1000 (HeLa) and 1:500 (HUVEC and C2C12)



GTX19348 ICC/IF Image

ICC/IF analysis of SH-SY5Y cells using GTX19348 N-Cadherin antibody [8C11]. Cells were probed without (left) or with(right) an antibody.

Green : Primary antibody

Blue : Nuclei

Red : Actin

Fixation : Formalin

Permeabilization : 0.1% Triton X-100 in TBS for 10 minutes

Dilution : 1:100 for at least 1 hour at room temperature



For full product information, images and publications, please visit our [website](https://www.genetex.com).