

P-Cadherin antibody [6A9]

Cat. No. GTX19350

Host	Mouse
Clonality	Monoclonal
Isotype	IgG1
Applications	WB, ICC/IF, IP, Neutralizing/Inhibition
Reactivity	Human, Mouse

Package
100 µg

Applications

Application Note

*Optimal dilutions/concentrations should be determined by the researcher.

Suggested dilution	Recommended dilution
WB	1:100-1:1000
ICC/IF	10 µg/ml
IP	Assay dependent
Neutralizing/Inhibition	Assay dependent

Not tested in other applications.

Calculated MW 91 kDa. ([Note](#))

Properties

Form	Liquid
Buffer	PBS, 0.1% BSA
Preservative	0.05% Sodium azide
Storage	Store as concentrated solution. Centrifuge briefly prior to opening vial. For short-term storage (1-2 weeks), store at 4°C. For long-term storage, aliquot and store at -20°C or below. Avoid multiple freeze-thaw cycles.
Concentration	1 mg/ml (Please refer to the vial label for the specific concentration.)
Immunogen	A431 trypsinized membranes.
Purification	Protein G purified
Conjugation	Unconjugated

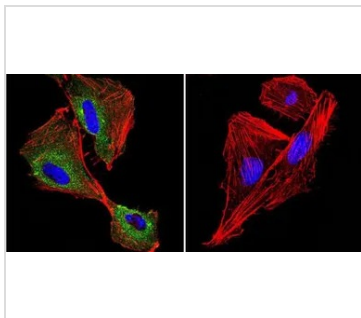
Note

For laboratory research use only. Not for any clinical, therapeutic, or diagnostic use in humans or animals. Not for animal or human consumption.

Purchasers shall not, and agree not to enable third parties to, analyze, copy, reverse engineer or otherwise attempt to determine the structure or sequence of the product.



For full product information, images and publications, please visit our [website](#).

DATA IMAGES

GTX19350 ICC/IF Image

ICC/IF analysis of BEAS-2B Cells using GTX19350 P-Cadherin antibody [6A9]. Cells were probed without (right) or with(left) an antibody.

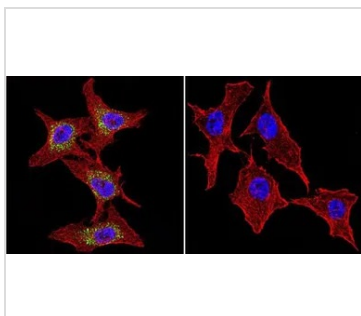
Green : Primary antibody

Blue : Nuclei

Red : Actin

Fixation : formaldehyde

Dilution : 1:20 overnight at 4°C


GTX19350 ICC/IF Image

ICC/IF analysis of HeLa cells using GTX19350 P-Cadherin antibody [6A9]. Cells were probed without (right) or with(left) an antibody.

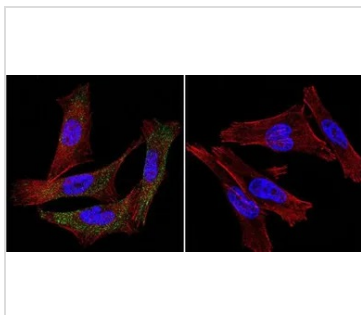
Green : Primary antibody

Blue : Nuclei

Red : Actin

Fixation : formaldehyde

Dilution : 1:20 overnight at 4°C


GTX19350 ICC/IF Image

ICC/IF analysis of A2058 Cells using GTX19350 P-Cadherin antibody [6A9]. Cells were probed without (right) or with(left) an antibody.

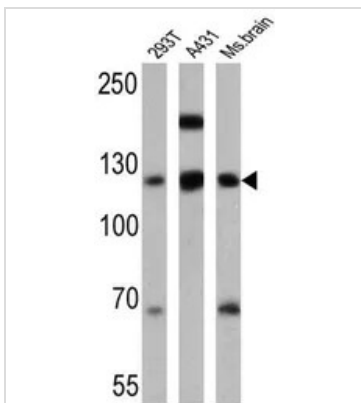
Green : Primary antibody

Blue : Nuclei

Red : Actin

Fixation : formaldehyde

Dilution : 1:20 overnight at 4°C


GTX19350 WB Image

WB analysis of 25 ug of 293T (lane 1), A431 (lane 2) and mouse brain (lane 3) using GTX19350 P-Cadherin antibody [6A9].

Dilution : 1:500



For full product information, images and publications, please visit our [website](http://www.genetex.com).