

CRMP5 antibody [CR-3]

Cat. No. GTX19352

Host	Rat
Clonality	Monoclonal
Isotype	IgG2a
Applications	WB, ICC/IF, IHC-P, IHC-Fr, IHC
Reactivity	Human, Mouse, Rat, Bovine

References (2)

Package

100 µl

Applications

Application Note

*Optimal dilutions/concentrations should be determined by the researcher.

Suggested dilution	Recommended dilution
WB	1:50 - 1:1,000
ICC/IF	1:250
IHC-P	Assay dependent
IHC-Fr	1:50 - 1:400
IHC	Assay dependent

Not tested in other applications.

Calculated MW 61 kDa. ([Note](#))

Product Note Not reactive with other CRMP isoforms.

Properties

Form	Liquid
Buffer	Ascites
Preservative	0.05% Sodium azide
Storage	Store as concentrated solution. Centrifuge briefly prior to opening vial. For short-term storage (1-2 weeks), store at 4°C. For long-term storage, aliquot and store at -20°C or below. Avoid multiple freeze-thaw cycles.
Immunogen	CRMP5 protein purified from human brain.
Purification	Unpurified
Conjugation	Unconjugated



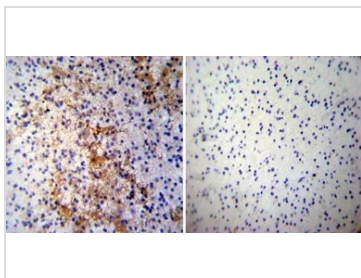
For full product information, images and publications, please visit our [website](#).

For laboratory research use only. Not for any clinical, therapeutic, or diagnostic use in humans or animals. Not for animal or human consumption.

Note

Purchasers shall not, and agree not to enable third parties to, analyze, copy, reverse engineer or otherwise attempt to determine the structure or sequence of the product.

DATA IMAGES



GTx19352 IHC-P Image

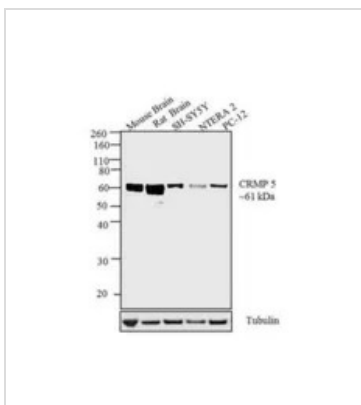
IHC-P analysis of human glioma tissue using GTx19352 CRMP5 antibody [CR-3].

Left : Primary antibody

Right : Negative control without primary antibody

Antigen retrieval : heat induced antigen retrieval was performed using 10mM sodium citrate (pH6.0) buffer, microwaved for 8-15 minutes

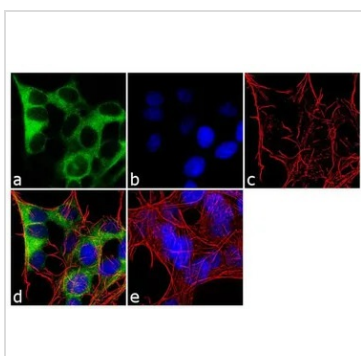
Dilution : 1:50



GTx19352 WB Image

WB analysis of tissue whole cell extracts (30 µg lysate) of Mouse Brain (Lane 1), Rat Brain (lane 2), SH-SY5Y (lane 3), NTERA 2 (Lane 4), and PC 12 (lane 5) using GTx19352 CRMP5 antibody [CR-3].

Dilution : 1:1000



GTx19352 ICC/IF Image

ICC/IF analysis of SH-SY5Y cells using GTx19352 CRMP5 antibody [CR-3]. Panel e is a no primary antibody control.

Green : Primary antibody

Blue : Nuclei

Red : Actin

Fixation : 4% paraformaldehyde

Permeabilization : 0.1% Triton X-100 for 10 minute

Dilution : 1:250 dilution in 0.1% BSA and incubated for 3 hours at room temperature



For full product information, images and publications, please visit our [website](https://www.genetex.com).