

CRMP5 antibody [CR-1]

Cat. No. GTX19378

Host	Rat
Clonality	Monoclonal
Isotype	IgG1
Applications	WB, ICC/IF, IHC-P, IHC-Fr, IHC
Reactivity	Human, Mouse, Rat, Bovine

Package
100 µl

Applications

Application Note

*Optimal dilutions/concentrations should be determined by the researcher.

Suggested dilution	Recommended dilution
WB	1:1000 - 1:2000
ICC/IF	1:250
IHC-P	Assay dependent
IHC-Fr	1:200
IHC	Assay dependent

Not tested in other applications.

Calculated MW 61 kDa. ([Note](#))

Product Note Not reactive with other CRMP isoforms.

Properties

Form	Liquid
Buffer	Ascites
Preservative	0.05% Sodium azide
Storage	Store as concentrated solution. Centrifuge briefly prior to opening vial. For short-term storage (1-2 weeks), store at 4°C. For long-term storage, aliquot and store at -20°C or below. Avoid multiple freeze-thaw cycles.
Immunogen	CRMP5 protein purified from human brain.
Purification	Unpurified
Conjugation	Unconjugated

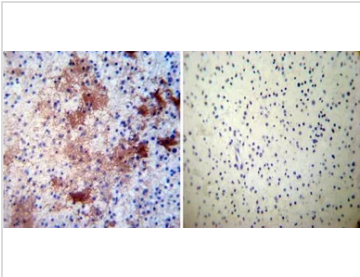


For full product information, images and publications, please visit our [website](#).

For laboratory research use only. Not for any clinical, therapeutic, or diagnostic use in humans or animals. Not for animal or human consumption.

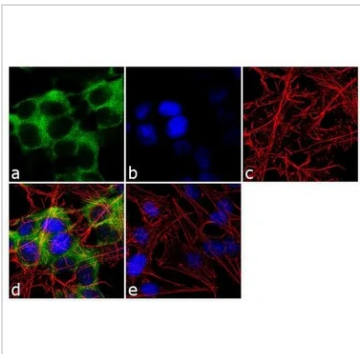
Note
 Purchasers shall not, and agree not to enable third parties to, analyze, copy, reverse engineer or otherwise attempt to determine the structure or sequence of the product.

DATA IMAGES



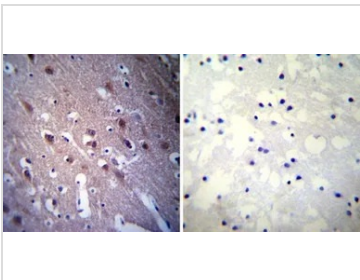
GTX19378 IHC-P Image

IHC-P analysis of human glioma tissue using GTX19378 CRMP5 antibody [CR-1].
 Left : Primary antibody
 Right : Negative control without primary antibody
 Antigen retrieval : heat induced antigen retrieval was performed using 10mM sodium citrate (pH6.0) buffer, microwaved for 8-15 minutes
 Dilution : 1:50



GTX19378 ICC/IF Image

ICC/IF analysis of SH-SY5Y cells using GTX19378 CRMP5 antibody [CR-1]. Panel e is a no primary antibody control.
 Green : Primary antibody
 Blue : Nuclei
 Red : Actin
 Fixation : 4% paraformaldehyde
 Permeabilization : 0.1% Triton X-100 for 10 minute
 Dilution : 1:250 dilution in 0.1% BSA and incubated for 3 hours at room temperature



GTX19378 IHC-P Image

IHC-P analysis of human brain tissue using GTX19378 CRMP5 antibody [CR-1].
 Left : Primary antibody
 Right : Negative control without primary antibody
 Antigen retrieval : heat induced antigen retrieval was performed using 10mM sodium citrate (pH6.0) buffer, microwaved for 8-15 minutes
 Dilution : 1:20



For full product information, images and publications, please visit our [website](#).