

## Melanopsin antibody

Cat. No. GTX19383

Host	Rabbit
Clonality	Polyclonal
Isotype	IgG
Applications	WB, ICC/IF, IHC-Fr, IHC
Reactivity	Human, Mouse, Rat, Rodent

References ( 3 )

Package

100 µg

## Applications

## Application Note

\*Optimal dilutions/concentrations should be determined by the researcher.

Suggested dilution	Recommended dilution
WB	0.1 - 0.2 µg/ml
ICC/IF	5 µg/ml
IHC-Fr	1:1000
IHC	Assay dependent

Not tested in other applications.

Calculated MW	52 kDa. ( <a href="#">Note</a> )
Product Note	This antibody can detect over-expressed melanopsin protein but it does not work well on endogenously expressed protein.

## Properties

Form	Liquid
Buffer	PBS, 0.1% BSA
Preservative	0.05% Sodium azide
Storage	Store as concentrated solution. Centrifuge briefly prior to opening vial. For short-term storage (1-2 weeks), store at 4°C. For long-term storage, aliquot and store at -20°C or below. Avoid multiple freeze-thaw cycles.
Concentration	1 mg/ml (Please refer to the vial label for the specific concentration.)
Immunogen	Synthetic peptide corresponding to residues E(455) Q K S K T P K T K R H L P S L D R R M(474) of rat melanopsin.
Purification	Purified by antigen-affinity chromatography
Conjugation	Unconjugated



For full product information, images and publications, please visit our [website](#).

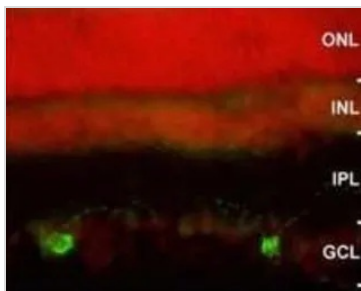
Date 2026 / 01 / 08 Page 1 of 2

For laboratory research use only. Not for any clinical, therapeutic, or diagnostic use in humans or animals. Not for animal or human consumption.

## Note

Purchasers shall not, and agree not to enable third parties to, analyze, copy, reverse engineer or otherwise attempt to determine the structure or sequence of the product.

## DATA IMAGES



### GTX19383 IHC Image

IHC analysis of rat retinal ganglion cells using GTX19383 Melanopsin antibody.



For full product information, images and publications, please visit our [website](#).

Date 2026 / 01 / 08 Page 2 of 2