

Her3 / ErbB3 antibody [RTJ2]

Cat. No. GTX19389

Host	Mouse
Clonality	Monoclonal
Isotype	IgG1
Applications	WB, ICC/IF, IHC-P, FCM, IP, ELISA
Reactivity	Human, Mouse

Package
200 µg

Applications

Application Note

*Optimal dilutions/concentrations should be determined by the researcher.

Suggested dilution	Recommended dilution
WB	Assay dependent
ICC/IF	1-2 µg/ml
IHC-P	5 µg/ml
FCM	0.5-2 µg/10 ⁶ cells
IP	Assay dependent
ELISA	Assay dependent

Not tested in other applications.

Calculated MW 148 kDa. ([Note](#))

Properties

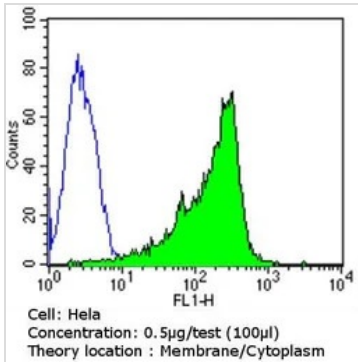
Form	Liquid
Buffer	PBS, 0.1% BSA
Preservative	0.05% Sodium azide
Storage	Store as concentrated solution. Centrifuge briefly prior to opening vial. For short-term storage (1-2 weeks), store at 4°C. For long-term storage, aliquot and store at -20°C or below. Avoid multiple freeze-thaw cycles.
Concentration	1 mg/ml (Please refer to the vial label for the specific concentration.)
Immunogen	Synthetic Peptide: E(1004) L E P E L D L D L D L E(1016)
Purification	Protein G purified
Conjugation	Unconjugated



For full product information, images and publications, please visit our [website](#).

For laboratory research use only. Not for any clinical, therapeutic, or diagnostic use in humans or animals. Not for animal or human consumption.

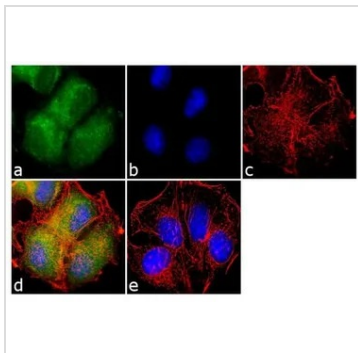
Note
 Purchasers shall not, and agree not to enable third parties to, analyze, copy, reverse engineer or otherwise attempt to determine the structure or sequence of the product.

DATA IMAGES

GTX19389 FCM Image

FACS analysis of HeLa cells using GTX19389 Her3 / ErbB3 antibody [RTJ2] compared to an isotype control (blue).

Dilution : 0.5 ug/test for 60 min at room temperature

Fixation : 2% paraformaldehyde


GTX19389 ICC/IF Image

ICC/IF analysis of MCF-7 cells using GTX19389 Her3 / ErbB3 antibody [RTJ2]. Panel e is a no primary antibody control.

Green : Primary antibody

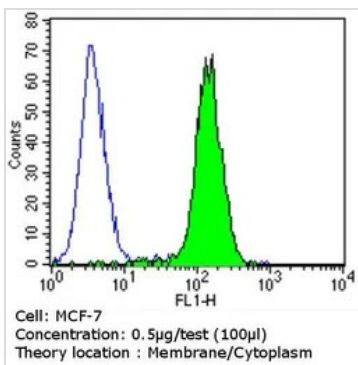
Blue : Nuclei

Red : Actin

Fixation : 4% paraformaldehyde

Permeabilization : 0.1% Triton X-100 for 10 minute

Dilution : 2 µg/ml in 0.1% BSA and incubated for 3 hours at room temperature


GTX19389 FCM Image

FACS analysis of MCF-7 cells using GTX19389 Her3 / ErbB3 antibody [RTJ2] compared to an isotype control (blue).

Dilution : 0.5 ug/test for 60 min at room temperature

Fixation : 2% paraformaldehyde



For full product information, images and publications, please visit our [website](#).