

## p54nrb antibody [78-1 C]

**Cat. No. GTX19407**

<b>Host</b>	Mouse
<b>Clonality</b>	Monoclonal
<b>Isotype</b>	IgG1
<b>Applications</b>	WB, IHC-P, IP, IHC
<b>Reactivity</b>	Human, Rat, Rabbit

**Package**  
100 µl

## Applications

**Application Note**

\*Optimal dilutions/concentrations should be determined by the researcher.

Suggested dilution	Recommended dilution
WB	1:1000
IHC-P	1:200
IP	Assay dependent
IHC	Assay dependent

Not tested in other applications.

**Calculated MW** 54 kDa. ([Note](#))

## Properties

<b>Form</b>	Liquid
<b>Buffer</b>	Ascites
<b>Preservative</b>	0.05% Sodium azide
<b>Storage</b>	Store as concentrated solution. Centrifuge briefly prior to opening vial. For short-term storage (1-2 weeks), store at 4°C. For long-term storage, aliquot and store at -20°C or below. Avoid multiple freeze-thaw cycles.
<b>Immunogen</b>	Synthetic peptide corresponding to residues T(140) V R E A G P P A F Y R P N S(154) of human ER alpha.
<b>Purification</b>	Unpurified
<b>Conjugation</b>	Unconjugated

**Note**

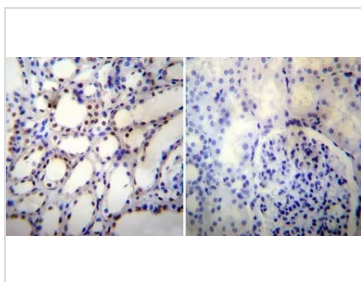
For laboratory research use only. Not for any clinical, therapeutic, or diagnostic use in humans or animals. Not for animal or human consumption.

Purchasers shall not, and agree not to enable third parties to, analyze, copy, reverse engineer or otherwise attempt to determine the structure or sequence of the product.



For full product information, images and publications, please visit our [website](#).

## DATA IMAGES

**GTX19407 IHC-P Image**

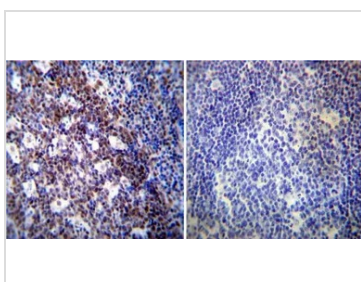
IHC-P analysis of human kidney tissue using GTX19407 p54nrb antibody [78-1 C].

Left : Primary antibody

Right : Negative control without primary antibody

Antigen retrieval : heat induced antigen retrieval was performed using 10mM sodium citrate (pH6.0) buffer, microwaved for 8-15 minutes

Dilution : 1:500

**GTX19407 IHC-P Image**

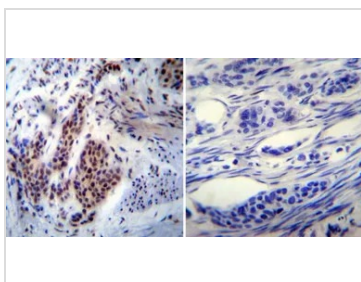
IHC-P analysis of human tonsil tissue using GTX19407 p54nrb antibody [78-1 C].

Left : Primary antibody

Right : Negative control without primary antibody

Antigen retrieval : heat induced antigen retrieval was performed using 10mM sodium citrate (pH6.0) buffer, microwaved for 8-15 minutes

Dilution : 1:200

**GTX19407 IHC-P Image**

IHC-P analysis of human bladder carcinoma tissue using GTX19407 p54nrb antibody [78-1 C].

Left : Primary antibody

Right : Negative control without primary antibody

Antigen retrieval : heat induced antigen retrieval was performed using 10mM sodium citrate (pH6.0) buffer, microwaved for 8-15 minutes

Dilution : 1:200



For full product information, images and publications, please visit our [website](#).