

## GCSF Receptor antibody [S1390]

Cat. No. GTX19479

Host	Mouse
Clonality	Monoclonal
Isotype	IgG2b
Applications	WB, ELISA
Reactivity	Human

References ( 1 )

Package

250 µg

## Applications

## Application Note

ELISA: Use at an assay dependent dilution. WB: Use at an assay dependent dilution. Predicted molecular weight: 92 kDa. Immunoblotting: Recognizes denatured G-CSFR following SDS-PAGE and blotting of 200 ug of cell lysate or following immunoprecipitation with polyclonal antibody followed by immunoblotting. Optimal dilutions/concentrations should be determined by the end user.

Calculated MW 92 kDa. ( [Note](#) )

Product Note Reactive with G-CSFR and does not cross-react with MBP or BSA (bovine serum albumin).

## Properties

Form	Liquid
Buffer	PBS
Preservative	No preservative
Storage	Store as concentrated solution. Centrifuge briefly prior to opening vial. For short-term storage (1-2 weeks), store at 4°C. For long-term storage, aliquot and store at -20°C or below. Avoid multiple freeze-thaw cycles.
Concentration	1 mg/ml (Please refer to the vial label for the specific concentration.)
Immunogen	Purified recombinant MBP-GCSFR fusion protein (Human).
Purification	Protein G purified
Conjugation	Unconjugated

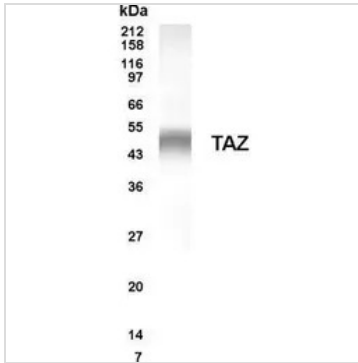
## Note

For laboratory research use only. Not for any clinical, therapeutic, or diagnostic use in humans or animals. Not for animal or human consumption.

Purchasers shall not, and agree not to enable third parties to, analyze, copy, reverse engineer or otherwise attempt to determine the structure or sequence of the product.



For full product information, images and publications, please visit our [website](#).

**DATA IMAGES**

**GTX19479 WB Image**


For full product information, images and publications, please visit our [website](https://www.genetex.com).