

EPO antibody [85]

Cat. No. GTX19485

Host	Mouse
Clonality	Monoclonal
Isotype	IgG1
Applications	WB, ELISA
Reactivity	Human

Package
250 µg

Applications

Application Note

ELISA: Use at an assay dependent dilution. Optimal dilutions/concentrations should be determined by the end user.

Calculated MW 21 kDa. ([Note](#))

Product Note Does not cross react with other human cytokines tested such as IL-8, IL-16, IL-7, MCP-1, TNF-beta, GM-CSF, M-CSF, IL-1 beta, bFGF, and human serum albumin or bovine serum albumin

Properties

Form Liquid

Buffer PBS

Preservative No preservatives

Storage Store as concentrated solution. Centrifuge briefly prior to opening vial. For short-term storage (1-2 weeks), store at 4°C. For long-term storage, aliquot and store at -20°C or below. Avoid multiple freeze-thaw cycles.

Concentration 1 mg/ml (Please refer to the vial label for the specific concentration.)

Immunogen Purified CHO cell-expressed recombinant human EPO.

Purification Protein G purified

Conjugation Unconjugated

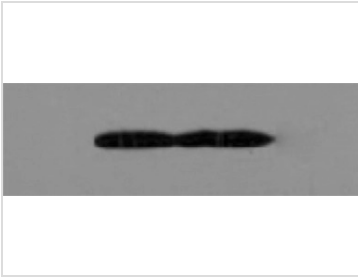
Note For laboratory research use only. Not for any clinical, therapeutic, or diagnostic use in humans or animals. Not for animal or human consumption.

Purchasers shall not, and agree not to enable third parties to, analyze, copy, reverse engineer or otherwise attempt to determine the structure or sequence of the product.



For full product information, images and publications, please visit our [website](#).

DATA IMAGES

**GTX19485 WB Image**

Western blot analysis detecting EPO antigen (100 ng/well) using mouse anti-human EPO antibody (clone 85) at 1:1000 dilution (1 ug/mL)



For full product information, images and publications, please visit our [website](#).