

# Collagen V antibody [MC5-HA]

**Cat. No. GTX19812**

<b>Host</b>	Mouse
<b>Clonality</b>	Monoclonal
<b>Isotype</b>	IgM
<b>Applications</b>	WB, IHC-Fr, ELISA, IHC (Formalin), IHC, RIA
<b>Reactivity</b>	Human

**Package**  
500 µl

## Applications

### Application Note

ELISA: 1/1000. IHC-Fr: 1/20 if FITC-labeled secondary antibodies are used. Otherwise use at an assay dependent dilution. RIA: Use at an assay dependent dilution. WB: Use at an assay dependent dilution. Predicted molecular weight: ~180 kDa. Is unsuitable for IHC-P. Optimal dilutions/concentrations should be determined by the end user.

### Product Note

GTX19812 reacts with native human as well as heat denatured human collagen type V in RIA, ELISA and immunoblot/WB assays. Does not react with other collagen types I, II, III, and IV. Human plasma proteins do not interfere with binding to collagen.

## Properties

<b>Form</b>	Liquid
<b>Buffer</b>	10mM Sodium Phosphate, 10mM Sodium borate, 150mM NaCl, 1% Dextran, 1% Mannitol
<b>Preservative</b>	No preservatives
<b>Storage</b>	Store as concentrated solution. Centrifuge briefly prior to opening vial. Store at 4°C.
<b>Concentration</b>	0.2 mg/ml (Please refer to the vial label for the specific concentration.)
<b>Immunogen</b>	Full length native protein (purified) (Human).
<b>Purification</b>	Purified IgM PEG6000 precipitation and Sepharose 6B gel filtration.
<b>Conjugation</b>	Unconjugated

### Note

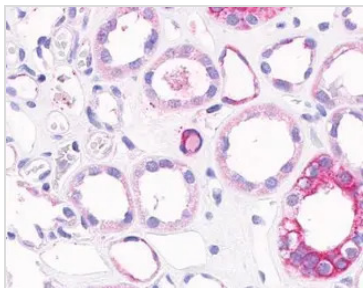
For laboratory research use only. Not for any clinical, therapeutic, or diagnostic use in humans or animals. Not for animal or human consumption.

Purchasers shall not, and agree not to enable third parties to, analyze, copy, reverse engineer or otherwise attempt to determine the structure or sequence of the product.



For full product information, images and publications, please visit our [website](#).

DATA IMAGES



GTX19812 IHC Image



For full product information, images and publications, please visit our [website](#).