

## SR-BI antibody

**Cat. No. GTX20003**

<b>Host</b>	Rabbit
<b>Clonality</b>	Polyclonal
<b>Isotype</b>	IgG
<b>Applications</b>	WB, ICC/IF, IHC-P, IHC-Fr, FCM, IP, Neutralizing/Inhibition
<b>Reactivity</b>	Human, Mouse, Rat, Bovine, Hamster, Mustelid, Schistosoma japonicum, Primate

References ( 4 )

Package

100 µl

### Applications

#### Application Note

\*Optimal dilutions/concentrations should be determined by the researcher.

Suggested dilution	Recommended dilution
WB	1:1000 - 1:5000
ICC/IF	1:50 - 1:1000
IHC-P	2.5 - 5 µg/ml
IHC-Fr	Assay dependent
FCM	1:400
IP	1:10 - 1:500
Neutralizing/Inhibition	Assay dependent

Not tested in other applications.

**Calculated MW** 57 kDa. ( [Note](#) )

### Properties

<b>Form</b>	Liquid
<b>Buffer</b>	PBS
<b>Preservative</b>	0.02% Sodium azide
<b>Storage</b>	Store as concentrated solution. Centrifuge briefly prior to opening vial. Store at 4°C. DO NOT FREEZE.
<b>Concentration</b>	1 mg/ml (Please refer to the vial label for the specific concentration.)
<b>Immunogen</b>	A C-terminal peptide containing residues from mouse SR-BI (within residues 450-509). [UniProt# Q61009]
<b>Purification</b>	Purified by antigen-affinity chromatography
<b>Conjugation</b>	Unconjugated

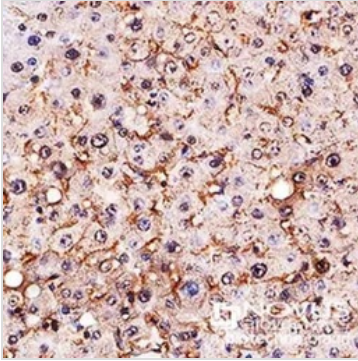


For full product information, images and publications, please visit our [website](#).

For laboratory research use only. Not for any clinical, therapeutic, or diagnostic use in humans or animals. Not for animal or human consumption.

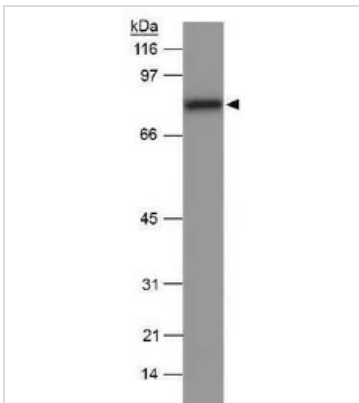
**Note**

Purchasers shall not, and agree not to enable third parties to, analyze, copy, reverse engineer or otherwise attempt to determine the structure or sequence of the product.

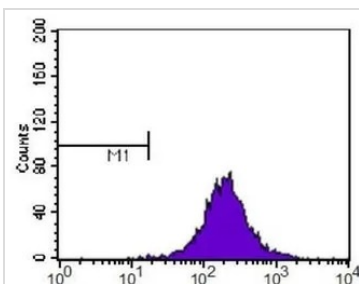
**DATA IMAGES**

**GTx20003 IHC-P Image**

IHC-P analysis of human liver tissue using GTx20003 SR-BI antibody.

Dilution : 1:300


**GTx20003 WB Image**

WB analysis of mouse liver tissue lysate using GTx20003 SR-BI antibody.


**GTx20003 FCM Image**

FACS analysis of HeLa cells using GTx20003 SR-BI antibody. M1 is defined by unstained cells.

Purple : primary antibody

Dilution : 1:400



For full product information, images and publications, please visit our [website](#).