

Calreticulin antibody

Cat. No. GTX20004

Host	Rabbit
Clonality	Polyclonal
Isotype	IgG
Application	WB, ICC/IF, IHC-P, IP, Dot, EM, Neutralizing/Inhibition
Reactivity	Human, Mouse, Rat, Bovine, Hamster, Primate

Reference (1)
Package
100 µl

APPLICATION

Application Note

*Optimal dilutions/concentrations should be determined by the researcher.

Suggested dilution	Recommended dilution
WB	1:1000
ICC/IF	1:50 - 1:250
IHC-P	1:50 - 1:200
IP	Assay dependent
Dot	Assay dependent
EM	Assay dependent
Neutralizing/Inhibition	Assay dependent

Not tested in other applications.

Calculated MW 48 kDa. ([Note](#))

PROPERTIES

Form	Liquid
Buffer	PBS
Preservative	0.02% Sodium azide
Storage	Store as concentrated solution. Centrifuge briefly prior to opening vial. For short-term storage (1-2 weeks), store at 4°C. For long-term storage, aliquot and store at -20°C or below. Avoid multiple freeze-thaw cycles.
Concentration	1 mg/ml (Please refer to the vial label for the specific concentration.)
Immunogen	A fusion protein to mouse Calreticulin [UniProt# P14211]
Purification	Purified by antigen-affinity chromatography
Conjugation	Unconjugated



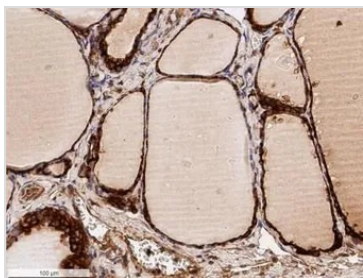
For full product information, images and publications, please visit our [website](#).

For laboratory research use only. Not for any clinical, therapeutic, or diagnostic use in humans or animals. Not for animal or human consumption.

Note

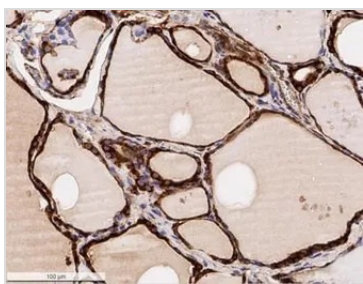
Purchasers shall not, and agree not to enable third parties to, analyze, copy, reverse engineer or otherwise attempt to determine the structure or sequence of the product.

DATA IMAGES



GTx20004 IHC-P Image

IHC-P analysis of human thyroid gland tissue using GTx20004 Calreticulin antibody.
Dilution : 1:50



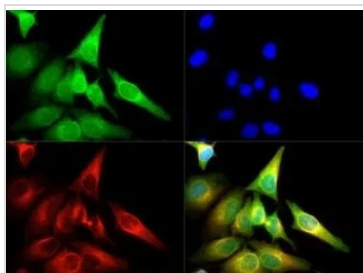
GTx20004 IHC-P Image

IHC-P analysis of human thyroid gland tissue using GTx20004 Calreticulin antibody.
Dilution : 1:50



GTx20004 WB Image

WB analysis of HeLa cell lysate using GTx20004 Calreticulin antibody.



GTx20004 ICC/IF Image

ICC/IF analysis of HeLa cells using GTx20004 Calreticulin antibody.
Green : primary antibody
Red : Tubulin
Blue : DAPI
Dilution : 1:250



For full product information, images and publications, please visit our [website](https://www.genetex.com).