

c-Myc antibody [9E10]

Cat. No. GTX20032

| | |
|-------------|-----------------------------|
| Host | Mouse |
| Clonality | Monoclonal |
| Isotype | IgG1 |
| Application | WB, ICC/IF, FACS, IP, ELISA |
| Reactivity | Human |

Reference (22)

★★★★★ Review (1)

Package

200 µg

APPLICATION

Application Note

*Optimal dilutions/concentrations should be determined by the researcher.

| Suggested dilution | Recommended dilution |
|--------------------|----------------------|
| WB | Assay dependent |
| ICC/IF | Assay dependent |
| FACS | Assay dependent |
| IP | Assay dependent |
| ELISA | Assay dependent |

Not tested in other applications.

Calculated MW 49 kDa. ([Note](#))

Product Note This antibody recognizes the sequence EQKLISEEDL

PROPERTIES

| | |
|---------------|--|
| Form | Liquid |
| Buffer | 0.2µm-filtered PBS pH7 |
| Preservative | No preservative |
| Storage | Store as concentrated solution. Centrifuge briefly prior to opening vial. Store at 4°C. DO NOT FREEZE. |
| Concentration | Batch dependent (Please refer to the vial label for the specific concentration.) |
| Immunogen | Synthetic peptide sequence corresponding to the C-terminal region (residues 408-439) of human c-myc conjugated to keyhole limpet hemocyanin. |
| Purification | Protein G purified From tissue culture supernatant |
| Purity | >95% (Determined by SDS-PAGE) |

For full product information, images and publications, please visit our [website](#).

Date 2024 / 04 / 28 Page 1 of 2

Endotoxin < 0.002 EU/管g (Determined by LAL assay)

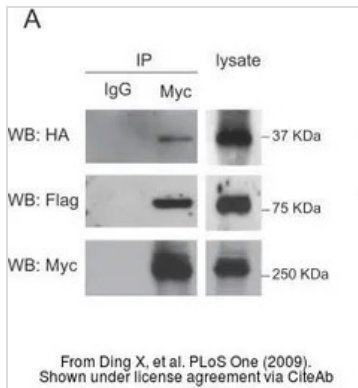
Conjugation Unconjugated

For laboratory research use only. Not for any clinical, therapeutic, or diagnostic use in humans or animals. Not for animal or human consumption.

Note

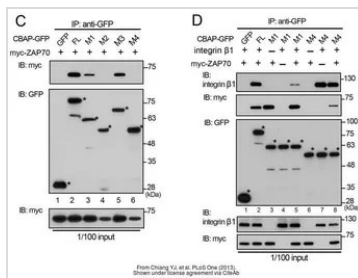
Purchasers shall not, and agree not to enable third parties to, analyze, copy, reverse engineer or otherwise attempt to determine the structure or sequence of the product.

DATA IMAGES



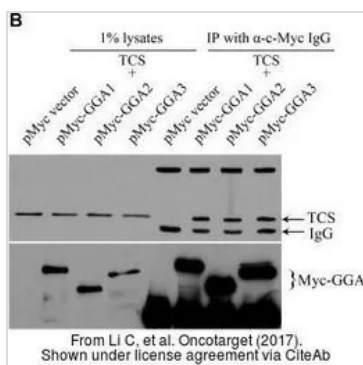
GTX20032 WB IP Image

The data was published in the journal PLoS One in 2009. [PMID: 19536328](#)



GTX20032 WB Image

The data was published in the journal PLoS One in 2013.[PMID: 23620790](#)



GTX20032 WB Image

The data was published in the journal Oncotarget in 2017. [PMID: 28460437](#)



For full product information, images and publications, please visit our [website](#).