

TIMP4 antibody

Cat. No. GTX20075

Host	Sheep
Clonality	Polyclonal
Isotype	IgM
Applications	WB, ICC/IF, IP, Dot, ELISA, IHC
Reactivity	Human

Package
100 µl

Applications

Application Note

IHC: Use at an assay dependent dilution, IP: Use at an assay dependent dilution, WB: Use at an assay dependent dilution, Recognizes recombinant human TIMP-4 on WB. Optimal dilutions/concentrations should be determined by the end user.

Calculated MW 26 kDa. ([Note](#))

Properties

Form	Liquid
Buffer	PBS
Preservative	No preservatives
Storage	Store as concentrated solution. Centrifuge briefly prior to opening vial. For short-term storage (1-2 weeks), store at 4°C. For long-term storage, aliquot and store at -20°C or below. Avoid multiple freeze-thaw cycles.
Concentration	10 mg/ml (Please refer to the vial label for the specific concentration.)
Immunogen	KLH conjugate of a C-terminal peptide corresponding to aa 213-224 of human TIMP4
Purification	Tissue culture supernatant This reagent has been adsorbed to remove non-specific anti-human reactivity. The IgG fraction was obtained by protein A purification.
Conjugation	Unconjugated

Note

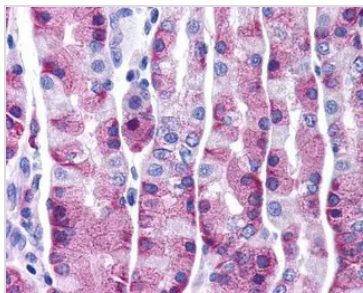
For laboratory research use only. Not for any clinical, therapeutic, or diagnostic use in humans or animals. Not for animal or human consumption.

Purchasers shall not, and agree not to enable third parties to, analyze, copy, reverse engineer or otherwise attempt to determine the structure or sequence of the product.



For full product information, images and publications, please visit our [website](#).

DATA IMAGES



GTX20075 IHC Image



For full product information, images and publications, please visit our [website](#).