

## p19ARF antibody

**Cat. No. GTX20080**

<b>Host</b>	Rabbit
<b>Clonality</b>	Polyclonal
<b>Isotype</b>	IgG
<b>Applications</b>	WB, ICC/IF, IHC-P, IHC-Fr, ELISA
<b>Reactivity</b>	Human, Mouse, Rat

References ( 10 )

Package

100 µl

## Applications

**Application Note**

\*Optimal dilutions/concentrations should be determined by the researcher.

Suggested dilution	Recommended dilution
WB	2 µg/ml
ICC/IF	1:50 - 1:100
IHC-P	10 µg/ml
IHC-Fr	1 µg/ml
ELISA	1:100 - 1:2000

Not tested in other applications.

## Properties

<b>Form</b>	Liquid
<b>Buffer</b>	Tris-Citrate/Phosphate
<b>Preservative</b>	0.1% Sodium azide
<b>Storage</b>	Store as concentrated solution. Centrifuge briefly prior to opening vial. For short-term storage (1-2 weeks), store at 4°C. For long-term storage, aliquot and store at -20°C or below. Avoid multiple freeze-thaw cycles.
<b>Concentration</b>	1 mg/ml (Please refer to the vial label for the specific concentration.)
<b>Immunogen</b>	Synthetic peptide conjugated to KLH, derived from a sequence within residues 50-150 of mouse p19ARF. [Swiss-Prot #Q64364]
<b>Purification</b>	Purified by antigen-affinity chromatography
<b>Conjugation</b>	Unconjugated

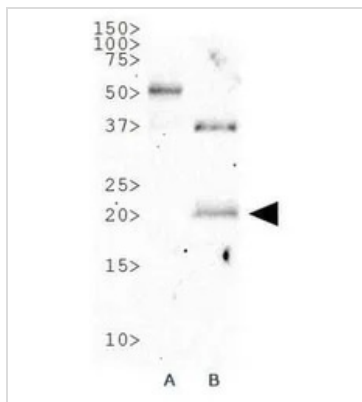
**Note**

For laboratory research use only. Not for any clinical, therapeutic, or diagnostic use in humans or animals. Not for animal or human consumption.

Purchasers shall not, and agree not to enable third parties to, analyze, copy, reverse engineer or otherwise attempt to determine the structure or sequence of the product.

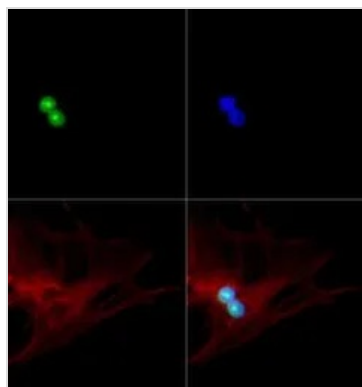
For full product information, images and publications, please visit our [website](#).

DATA IMAGES



**GTX20080 WB Image**

WB analysis of (1)NIH-3T3 and (2)MEF cell lysate using GTX20080 p19ARF antibody.



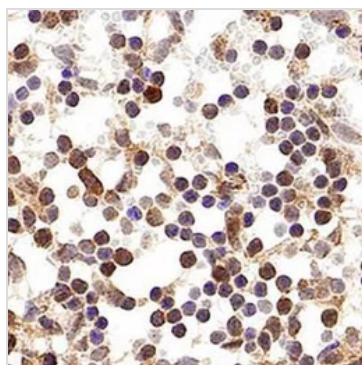
**GTX20080 ICC/IF Image**

ICC/IF analysis of MEF cells using GTX20080 p19ARF antibody.

Green : primary antibody

Red : Tubulin

Blue : DAPI

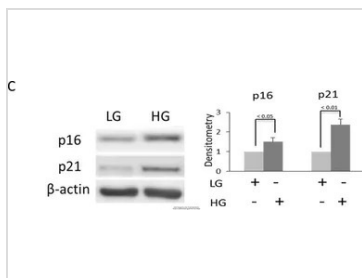


**GTX20080 IHC-P Image**

IHC-P analysis of mouse spleen tissue using GTX20080 p19ARF antibody.

Dilution : 10 µg/ml

Antigen retrieval : Heat induced antigen retrieval (HIER) using 10mM sodium citrate buffer (pH 6.0)



**GTX20080 WB Image**

The data was published in the journal PLoS One in 2015. [PMID: 25961745](https://doi.org/10.1371/journal.pone.0259617)



For full product information, images and publications, please visit our [website](https://www.genetex.com).