

Swine Influenza A virus H1N1 HA (Hemagglutinin) antibody

Cat. No. GTX20084

Host	Rabbit
Clonality	Polyclonal
Isotype	IgG
Applications	WB, ELISA
Reactivity	Swine Influenza A virus

Package
100 µg

Applications

Application Note

*Optimal dilutions/concentrations should be determined by the researcher.

Suggested dilution	Recommended dilution
WB	Assay dependent
ELISA	1 µg/mL

Note : It will detect 2 ng of free peptide at 1 µg/mL

Not tested in other applications.

Product Note

This antibody is specific for the novel swine influenza Hemagglutinin and will not recognize the corresponding Hemagglutinin sequence from the seasonal H1N1 influenza (A/Brisbane/59/2007 (H1N1)). Will not cross-react with peptide corresponding to the seasonal H1N1 Hemagglutinin.

Properties

Form	Liquid
Buffer	PBS
Preservative	0.02% Sodium azide
Storage	Store as concentrated solution. Centrifuge briefly prior to opening vial. For short-term storage (1-2 weeks), store at 4°C. For long-term storage, aliquot and store at -20°C or below. Avoid multiple freeze-thaw cycles.
Concentration	1 mg/ml (Please refer to the vial label for the specific concentration.)
Immunogen	Hemagglutinin antibody was raised against a synthetic peptide from the novel swine influenza Hemagglutinin protein. The peptide sequence is unique from the peptide sequence for product 5241 and 5233. This antibody is a cognate pair with product 5235. The immunogen is located within amino acids 180 - 230 of Swine H1N1 Hemagglutinin.
Purification	Purified by antigen-affinity chromatography
Conjugation	Unconjugated



For full product information, images and publications, please visit our [website](#).

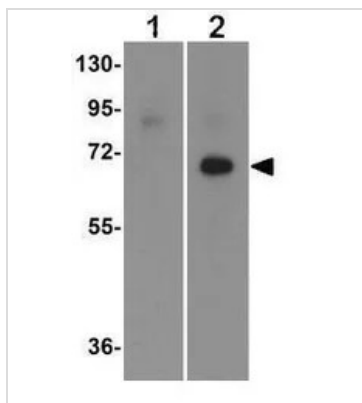
Date 2025 / 12 / 16 Page 1 of 2

For laboratory research use only. Not for any clinical, therapeutic, or diagnostic use in humans or animals. Not for animal or human consumption.

Note

Purchasers shall not, and agree not to enable third parties to, analyze, copy, reverse engineer or otherwise attempt to determine the structure or sequence of the product.

DATA IMAGES



GTX20084 WB Image

WB analysis of recombinant seasonal Hemagglutinin (lanes A & B) and swine-origin Hemagglutinin (lanes C & D) using anti-seasonal Hemagglutinin antibody (lanes A & C) and GTX20084 Swine Influenza A virus H1N1 HA (Hemagglutinin) .

Working concentration : 2 µg/ml antibody (lanes B & D).



For full product information, images and publications, please visit our [website](#).