

# LIMP II antibody

**Cat. No. GTX20114**

<b>Host</b>	Rabbit
<b>Clonality</b>	Polyclonal
<b>Isotype</b>	IgG
<b>Applications</b>	WB, ICC/IF, IHC-P, FCM
<b>Reactivity</b>	Human, Mouse, Rat, Bovine, Hamster, Mustelid

**Package**  
100 µl

## Applications

### Application Note

\*Optimal dilutions/concentrations should be determined by the researcher.

Suggested dilution	Recommended dilution
WB	1:1000
ICC/IF	1:25 - 1:100
IHC-P	1:25
FCM	Assay dependent

Not tested in other applications.

**Calculated MW** 54 kDa. ( [Note](#) )

## Properties

<b>Form</b>	Liquid
<b>Buffer</b>	Serum
<b>Preservative</b>	0.1% Sodium azide
<b>Storage</b>	Store as concentrated solution. Centrifuge briefly prior to opening vial. For short-term storage (1-2 weeks), store at 4°C. For long-term storage, aliquot and store at -20°C or below. Avoid multiple freeze-thaw cycles.
<b>Immunogen</b>	A peptide containing residues from mouse SR-BII (between residues 400-478) plus an N-terminal cysteine was coupled to KLH. [UniProt# O35114]
<b>Purification</b>	Unpurified
<b>Conjugation</b>	Unconjugated

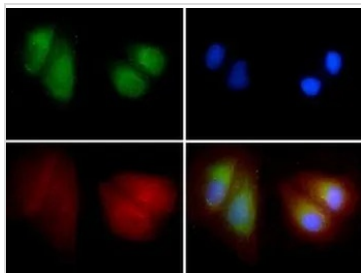
### Note

For laboratory research use only. Not for any clinical, therapeutic, or diagnostic use in humans or animals. Not for animal or human consumption.

Purchasers shall not, and agree not to enable third parties to, analyze, copy, reverse engineer or otherwise attempt to determine the structure or sequence of the product.



For full product information, images and publications, please visit our [website](#).

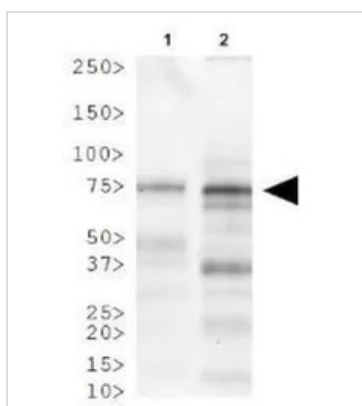
**DATA IMAGES**

**GTx20114 ICC/IF Image**

ICC/IF analysis of U2OS cells using GTx20114 LIMP II antibody.

Green : primary antibody

Red : Tubulin

Blue : DAPI


**GTx20114 WB Image**

WB analysis of (1) human heart and (2) mouse heart tissue lysate using GTx20114 LIMP II antibody.



For full product information, images and publications, please visit our [website](https://www.genetex.com).