

Ubiquitin antibody [1B4-UB]

Cat. No. GTX20122

Host	Mouse
Clonality	Monoclonal
Isotype	IgG1
Applications	WB, IHC-P, IHC-Fr, FCM, ELISA
Reactivity	Species independent

Package
50 µg

Applications

Application Note

*Optimal dilutions/concentrations should be determined by the researcher.

Suggested dilution	Recommended dilution
WB	1/100-1/1,000
IHC-P	1/500-1/1,000
IHC-Fr	1/500-1/1,000
FCM	1/10-1/50
ELISA	Assay dependent

Note : Permeabilization step is needed.

Not tested in other applications.

Properties

Form	Liquid
Buffer	PBS
Preservative	0.09% Sodium azide
Storage	Store as concentrated solution. Centrifuge briefly prior to opening vial. For short-term storage (1-2 weeks), store at 4°C. For long-term storage, aliquot and store at -20°C or below. Avoid multiple freeze-thaw cycles.
Concentration	1.0 mg/ml (Please refer to the vial label for the specific concentration.)
Immunogen	Ubiquitin from bovine erythrocytes conjugated to bovine gamma globulin.
Purification	Protein G purified From tissue culture supernatant
Conjugation	Unconjugated



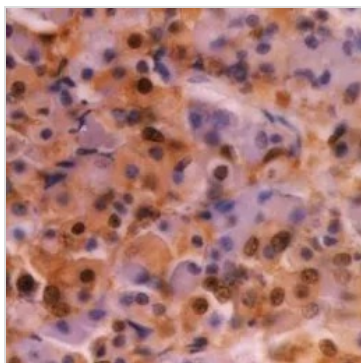
For full product information, images and publications, please visit our [website](#).

For laboratory research use only. Not for any clinical, therapeutic, or diagnostic use in humans or animals. Not for animal or human consumption.

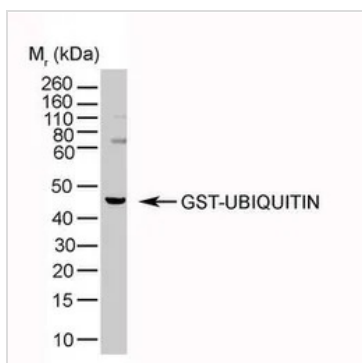
Note

Purchasers shall not, and agree not to enable third parties to, analyze, copy, reverse engineer or otherwise attempt to determine the structure or sequence of the product.

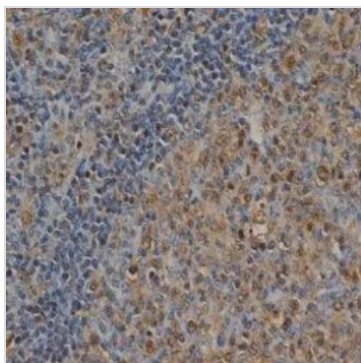
DATA IMAGES

**GTX20122 IHC-P Image**

IHC-P analysis of human hypophysis tissue using GTX20122 Ubiquitin antibody [1B4-UB].

**GTX20122 WB Image**

WB analysis of GST-ubiquitin recombinant protein using GTX20122 Ubiquitin antibody [1B4-UB].

**GTX20122 IHC-P Image**

IHC-P analysis of human tonsil tissue using GTX20122 Ubiquitin antibody [1B4-UB].



For full product information, images and publications, please visit our [website](#).