

Myc tag antibody

Cat. No. GTX20172

Host	Chicken
Clonality	Polyclonal
Isotype	IgY
Applications	WB, ICC/IF, IP, ELISA, IHC
Reactivity	Species independent

Package

50 µg

Applications

Application Note

*Optimal dilutions/concentrations should be determined by the researcher.

Suggested dilution	Recommended dilution
WB	1:500-1:1000
ICC/IF	Assay dependent
IP	Assay dependent
ELISA	Assay dependent
IHC	1:100-1:250

Not tested in other applications.

Properties

Form	Liquid
Buffer	PBS
Preservative	0.02% Sodium azide
Storage	Store as concentrated solution. Centrifuge briefly prior to opening vial. Store at 4°C. DO NOT FREEZE.
Concentration	0.1 mg/ml (Please refer to the vial label for the specific concentration.)
Immunogen	Chickens were immunized with a synthetic peptide containing the human c-myc epitope (i.e., EQKLISEEDL) conjugated to keyhole limpet hemocyanin.
Purification	Purified by antigen-affinity chromatography Antibodies were purified from the yolks using a proprietary method that yields a purity of >90%. Antibodies were affinity-purified over a SulfoLinkÆ (Pierce) column conjugated with the peptide used for immunizations, and then dialyzed against PBS. Filter-
Conjugation	Unconjugated

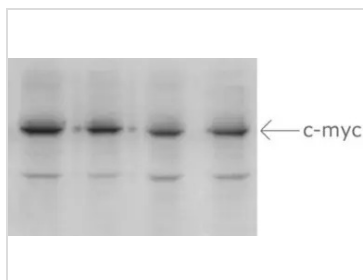
For full product information, images and publications, please visit our [website](#).

For laboratory research use only. Not for any clinical, therapeutic, or diagnostic use in humans or animals. Not for animal or human consumption.

Note

Purchasers shall not, and agree not to enable third parties to, analyze, copy, reverse engineer or otherwise attempt to determine the structure or sequence of the product.

DATA IMAGES



GTX20172 WB Image

WB analysis of SAP1a cDNA fused with a c-myc epitope tag transfected cell using GTX20172 Myc tag antibody.

Lane 1 : 30 ug protein

Lane 2 : 20 ug protein

Lane 3 : 10 ug protein

Lane 4 : 5 ug protein



For full product information, images and publications, please visit our [website](#).