

Ogg1 antibody

Cat. No. GTX20204

Host	Rabbit
Clonality	Polyclonal
Isotype	IgG
Application	WB, ICC/IF, IHC-P, IHC-Fr, FACS, IP, ELISA
Reactivity	Human, Mouse, Rat, Primate

Reference (5)
Package
100 µl

APPLICATION

Application Note

*Optimal dilutions/concentrations should be determined by the researcher.

Suggested dilution	Recommended dilution
WB	1:500 - 1:1000
ICC/IF	1:100 - 1:500
IHC-P	Assay dependent
IHC-Fr	1:25 - 1:100
FACS	Assay dependent
IP	1:10 - 1:500
ELISA	Assay dependent

Not tested in other applications.

Calculated MW 39 kDa. ([Note](#))

PROPERTIES

Form	Liquid
Buffer	PBS
Preservative	0.05% Sodium azide
Storage	Store as concentrated solution. Centrifuge briefly prior to opening vial. For short-term storage (1-2 weeks), store at 4°C. For long-term storage, aliquot and store at -20°C or below. Avoid multiple freeze-thaw cycles.
Concentration	1 mg/ml (Please refer to the vial label for the specific concentration.)
Immunogen	A peptide derived from human Ogg1 (within amino acids 1-100). [UniProt# O15527]
Purification	Purified by antigen-affinity chromatography
Conjugation	Unconjugated



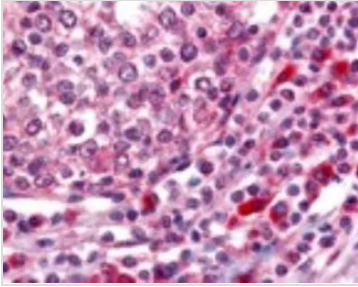
For full product information, images and publications, please visit our [website](#).

For laboratory research use only. Not for any clinical, therapeutic, or diagnostic use in humans or animals. Not for animal or human consumption.

Note

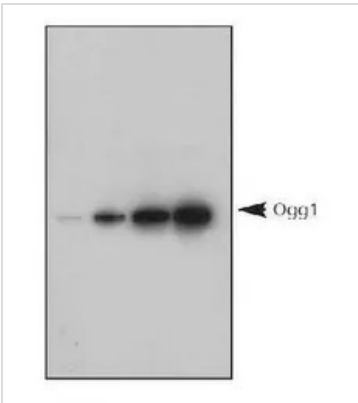
Purchasers shall not, and agree not to enable third parties to, analyze, copy, reverse engineer or otherwise attempt to determine the structure or sequence of the product.

DATA IMAGES



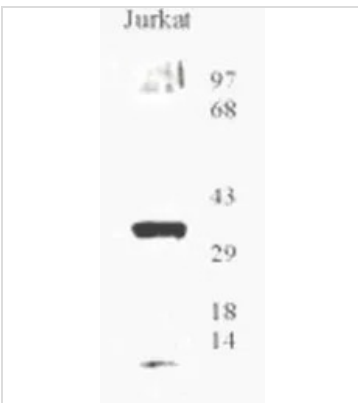
GTX20204 IHC-P Image

IHC-P analysis of human tonsillar germinal center and mantle zone using GTX20204 Ogg1 antibody.



GTX20204 WB Image

WB analysis of 1, 5, 10 and 20 ng human recombinant Ogg1 protein using GTX20204 Ogg1 antibody.



GTX20204 WB Image

WB analysis of Jurkat cell lysate using GTX20204 Ogg1 antibody.



For full product information, images and publications, please visit our [website](#).