

F-Actin antibody [NH3]

Cat. No. GTX20205

Host	Mouse
Clonality	Monoclonal
Isotype	IgM
Applications	WB, ICC/IF, IHC-Fr, FCM, ELISA
Reactivity	Human, Mouse, Rat, Rabbit

References (3)

Package

500 µg

Applications

Application Note

*Optimal dilutions/concentrations should be determined by the researcher.

Suggested dilution	Recommended dilution
WB	1/100-1/500
ICC/IF	1:100-1:1000
IHC-Fr	Assay dependent
FCM	1/10
ELISA	Assay dependent

Note : Use 10µl of the suggested working dilution to label 10⁶ cells in 100µl.

Not tested in other applications.

Product Note

This antibody recognizes human Filamentous actin (F-actin). The antibody binds to the N-terminal region of actin, but not to the extreme N-terminal 40 amino acids.

Properties

Form	Liquid
Buffer	PBS
Preservative	0.09% Sodium azide
Storage	Store as concentrated solution. Centrifuge briefly prior to opening vial. For short-term storage (1-2 weeks), store at 4°C. For long-term storage, aliquot and store at -20°C or below. Avoid multiple freeze-thaw cycles.
Concentration	1.0 mg/ml (Please refer to the vial label for the specific concentration.)
Immunogen	Human monocytes and U937 cell line.
Purification	Purified IgM From tissue culture supernatant
Conjugation	Unconjugated



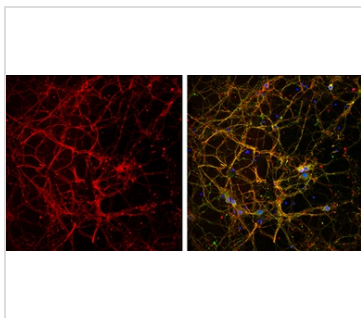
For full product information, images and publications, please visit our [website](#).

For laboratory research use only. Not for any clinical, therapeutic, or diagnostic use in humans or animals. Not for animal or human consumption.

Note

Purchasers shall not, and agree not to enable third parties to, analyze, copy, reverse engineer or otherwise attempt to determine the structure or sequence of the product.

DATA IMAGES



GTX20205 ICC/IF Image

F-Actin antibody [NH3] detects F-Actin protein at cytoskeleton by immunofluorescent analysis.

Sample: Cultured rat E18 primary cortical neuron, DIV 8. Cells were fixed in 4% paraformaldehyde at RT for 15 min.

Red: F-Actin protein stained by F-Actin antibody [NH3] (GTX20205) diluted at 1:250.

Green: NF-M, stained by NF-M antibody (GTX85461) diluted at 1:250.

Blue: Fluoroshield with DAPI (GTX30920).



For full product information, images and publications, please visit our [website](#).