

## EGFR antibody [ICR10]

Cat. No. GTX20231

Host	Rat
Clonality	Monoclonal
Isotype	IgG2a
Applications	ICC/IF, IHC-P, IHC-Fr, FCM, IP
Reactivity	Human

References ( 7 )

Package

100 µg

## Applications

## Application Note

\*Optimal dilutions/concentrations should be determined by the researcher.

Suggested dilution	Recommended dilution
ICC/IF	Assay dependent
IHC-P	Assay dependent
IHC-Fr	Assay dependent
FCM	1/50-1/100
IP	Assay dependent

**Note :** Use 10µl of the suggested working dilution to label 10<sup>6</sup> cells in 100µl.

Not tested in other applications.

**Product Note** This antibody, clone ICR10 binds to epitope B from EGFR

## Properties

Form	Liquid
Buffer	PBS
Preservative	0.09% Sodium azide
Storage	Store as concentrated solution. Centrifuge briefly prior to opening vial. For short-term storage (1-2 weeks), store at 4°C. For long-term storage, aliquot and store at -20°C or below. Avoid multiple freeze-thaw cycles.
Concentration	1.0 mg/ml (Please refer to the vial label for the specific concentration.)
Immunogen	Extracellular domain of human EGF-receptor from head and neck carcinoma.
Purification	Purified by ion exchange chromatography
Conjugation	Unconjugated

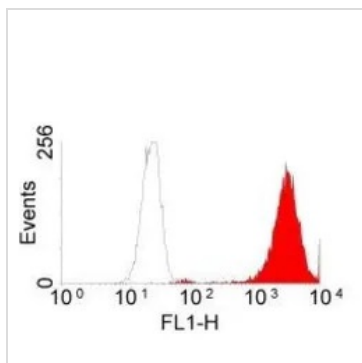


For full product information, images and publications, please visit our [website](#).

For laboratory research use only. Not for any clinical, therapeutic, or diagnostic use in humans or animals. Not for animal or human consumption.

**Note**

Purchasers shall not, and agree not to enable third parties to, analyze, copy, reverse engineer or otherwise attempt to determine the structure or sequence of the product.

**DATA IMAGES**

**GTX20231 FCM Image**

FACS analysis of A431 cells using GTX20231 EGFR antibody [ICR10].



For full product information, images and publications, please visit our [website](#).