

EAAT1 antibody

Cat. No. GTX20262

| | |
|---------------------|---------------------------------------|
| Host | Rabbit |
| Clonality | Polyclonal |
| Isotype | IgG |
| Applications | WB, ICC/IF, IHC-P, IHC-Fr, FCM, ELISA |
| Reactivity | Human, Mouse, Rat, Bovine |

References (3)

Package

100 µl

Applications

Application Note

*Optimal dilutions/concentrations should be determined by the researcher.

| Suggested dilution | Recommended dilution |
|--------------------|----------------------|
| WB | 2 µg/ml |
| ICC/IF | 1:10 - 1:500 |
| IHC-P | 1:50 - 1:500 |
| IHC-Fr | 1:10 - 1:500 |
| FCM | 1:200 - 1:500 |
| ELISA | 1:100 - 1:2000 |

Not tested in other applications.

Calculated MW 60 kDa. ([Note](#))

Properties

| | |
|----------------------|----------------------------------------------------------------------------------------------------------------------------------------------------------------------------------------------------------------------------|
| Form | Liquid |
| Buffer | PBS |
| Preservative | 0.02% Sodium azide |
| Storage | Store as concentrated solution. Centrifuge briefly prior to opening vial. For short-term storage (1-2 weeks), store at 4°C. For long-term storage, aliquot and store at -20°C or below. Avoid multiple freeze-thaw cycles. |
| Concentration | 1 mg/ml (Please refer to the vial label for the specific concentration.) |
| Immunogen | A synthetic peptide made to a C-terminal portion of the rat SLC1A3 protein (between residues 500-542) [UniProt P24942] |
| Purification | Purified by antigen-affinity chromatography |
| Conjugation | Unconjugated |

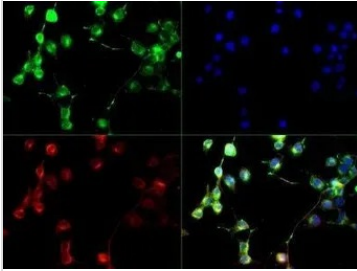


For full product information, images and publications, please visit our [website](#).

For laboratory research use only. Not for any clinical, therapeutic, or diagnostic use in humans or animals. Not for animal or human consumption.

Note

Purchasers shall not, and agree not to enable third parties to, analyze, copy, reverse engineer or otherwise attempt to determine the structure or sequence of the product.

DATA IMAGES

GTx20262 ICC/IF Image

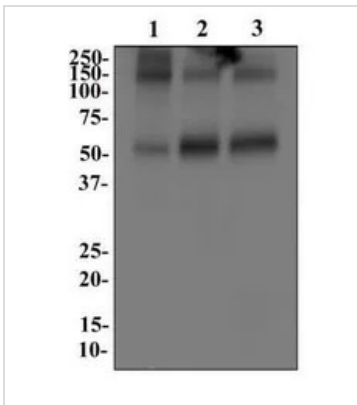
ICC/IF analysis of Neuro2a cells using GTx20262 EAAT1 antibody.

Green : primary antibody

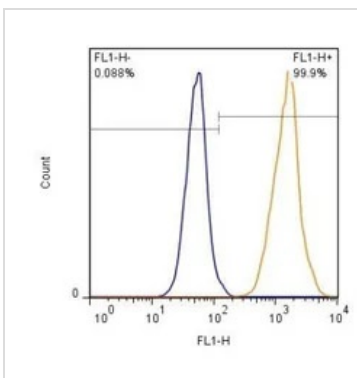
Red : Tubulin

Blue : DAPI

Dilution : 1:250


GTx20262 WB Image

WB analysis of (1) human, (2) mouse, and (3) rat brain tissue lysate using GTx20262 EAAT1 antibody.


GTx20262 FCM Image

FACS (Intracellular staining) analysis of HEK293 cells using GTx20262 EAAT1 antibody.

Orange : Primary antibody

Blue : isotype control

Dilution : 1:500



For full product information, images and publications, please visit our [website](https://www.genetex.com).