

## SPRY4 antibody

Cat. No. GTX20265

Host	Rabbit
Clonality	Polyclonal
Isotype	IgG
Applications	WB, IHC-P, ELISA
Reactivity	Human, Mouse

Package  
100 µg

## Applications

## Application Note

\*Optimal dilutions/concentrations should be determined by the researcher.

Suggested dilution	Recommended dilution
WB	1:100-1:1000
IHC-P	1-10 µg/mL
ELISA	1:3000-1:12000

Not tested in other applications.

Calculated MW 33 kDa. ([Note](#))

## Properties

Form	Liquid
Buffer	20mM Potassium Phosphate, 150mM NaCl
Preservative	0.01% Sodium azide
Storage	Store as concentrated solution. Centrifuge briefly prior to opening vial. For short-term storage (1-2 weeks), store at 4°C. For long-term storage, aliquot and store at -20°C or below. Avoid multiple freeze-thaw cycles.
Concentration	1.1 mg/ml (Please refer to the vial label for the specific concentration.)
Immunogen	Synthetic peptide corresponding to a C-Terminal region near amino acids 275-299 of Human Sprouty-4 protein.
Purification	Purified by antigen-affinity chromatography. From serum
Conjugation	Unconjugated

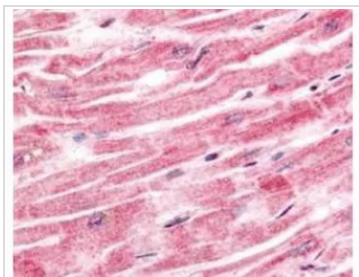
## Note

For laboratory research use only. Not for any clinical, therapeutic, or diagnostic use in humans or animals. Not for animal or human consumption.

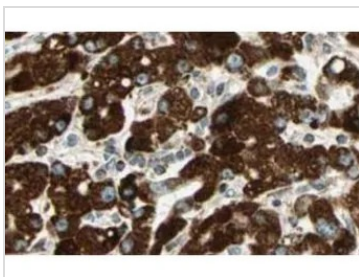
Purchasers shall not, and agree not to enable third parties to, analyze, copy, reverse engineer or otherwise attempt to determine the structure or sequence of the product.



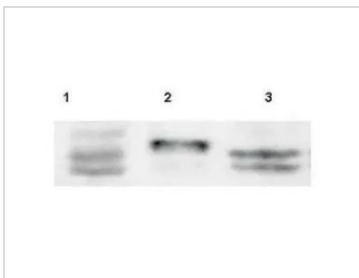
For full product information, images and publications, please visit our [website](#).

**DATA IMAGES**

**GTx20265 IHC-P Image**

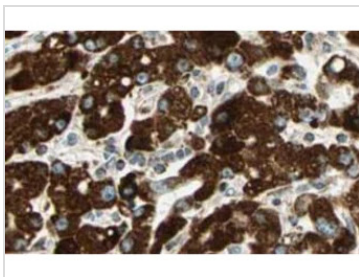
Immunohistochemistry of Rabbit anti-Sprouty-4 antibody. Tissue: human heart tissue. Fixation: formalin fixed paraffin embedded. Antigen retrieval: not required. Primary antibody: Sprouty-4 antibody at 2.5 µg/ml for 1 h at RT. Secondary antibody: Peroxidase rabbit secondary antibody at 1:10,000 for 45 min at RT. Localization: Sprouty-4 is cytoplasmic. Staining: Sprouty-4 as precipitated red signal with hematoxylin purple nuclear counterstain.


**GTx20265 IHC-P Image**

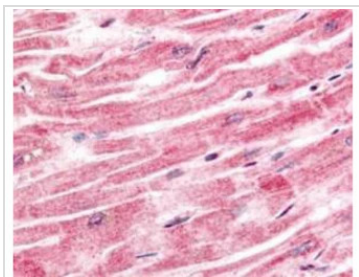
Immunohistochemistry of Rabbit anti-Sprouty-4 antibody. Tissue: human liver tissue. Fixation: formalin fixed paraffin embedded. Antigen retrieval: not required. Primary antibody: Sprouty-4 antibody at 2.5 µg/mL for 1 h at RT. Secondary antibody: Peroxidase rabbit secondary antibody at 1:10,000 for 45 min at RT. Localization: Sprouty-4 is cytoplasmic. Staining: Sprouty-4 as precipitated brown with blue nuclear counterstain.


**GTx20265 WB Image**

Western Blot of Rabbit anti-Sprouty-4 antibody. Lane 1: HeLa. Lane 2: SW13. Lane 3: C2C12. Load: 30 µg per lane. Primary antibody: Sprouty 4 antibody at 1:100 for overnight at 4°C. Secondary antibody: IRDye800™ rabbit secondary antibody at 1:5,000 for 45 min at RT. Block: 5% BLOTTO overnight at 4°C. Predicted/Observed size: a doublet band ~35 kDa corresponding to human Sprouty-4. Other band(s): none.


**GTx20265 IHC-P Image**

IHC-P analysis of human liver tissue using GTx20265 SPRY4 antibody.  
Dilution : 2.5 µg/mL


**GTx20265 IHC-P Image**

IHC-P analysis of human heart tissue using GTx20265 SPRY4 antibody.  
Dilution : 2.5 µg/mL



For full product information, images and publications, please visit our [website](https://www.genetex.com).