

Rabbit Anti-Llama IgG antibody

Cat. No. GTX20266

Host	Rabbit
Clonality	Polyclonal
Isotype	IgG
Applications	WB
Reactivity	Llama

Package
500 µg

Applications

Application Note

*Optimal dilutions/concentrations should be determined by the researcher.

Suggested dilution	Recommended dilution
WB	1:30,000

Not tested in other applications.

Product Note This antibody recognizes both heavy and light chains.

Properties

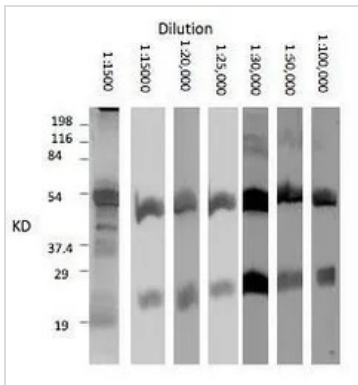
Form	Liquid
Buffer	PBS
Preservative	0.02% Sodium azide
Storage	Store as concentrated solution. Centrifuge briefly prior to opening vial. For short-term storage (1-2 weeks), store at 4°C. For long-term storage, aliquot and store at -20°C or below. Avoid multiple freeze-thaw cycles.
Concentration	Batch dependent (Please refer to the vial label for the specific concentration.)
Immunogen	Purified Llama IgG
Purification	Purified by affinity chromatography
Conjugation	Unconjugated

Note For laboratory research use only. Not for any clinical, therapeutic, or diagnostic use in humans or animals. Not for animal or human consumption.

Purchasers shall not, and agree not to enable third parties to, analyze, copy, reverse engineer or otherwise attempt to determine the structure or sequence of the product.



For full product information, images and publications, please visit our [website](#).

DATA IMAGES

GTX20266 WB Image

WB analysis of purified llama IgG using GTX20266 Rabbit Anti-llama IgG antibody.
 Optimal dilution is 1:30,000. This antibody labels both heavy and light chain of llama IgG.



For full product information, images and publications, please visit our [website](#).