

Goat Anti-Llama IgG antibody

Cat. No. GTX20271

Host	Goat
Clonality	Polyclonal
Isotype	IgG
Applications	WB
Reactivity	Llama

Package
500 µg

Applications

Application Note

*Optimal dilutions/concentrations should be determined by the researcher.

Suggested dilution	Recommended dilution
WB	1:15,000

Not tested in other applications.

Product Note This antibody recognizes both heavy and light chains.

Properties

Form	Liquid
Buffer	PBS
Preservative	0.02% Sodium azide
Storage	Store as concentrated solution. Centrifuge briefly prior to opening vial. For short-term storage (1-2 weeks), store at 4°C. For long-term storage, aliquot and store at -20°C or below. Avoid multiple freeze-thaw cycles.
Concentration	Batch dependent (Please refer to the vial label for the specific concentration.)
Immunogen	Purified Llama IgG
Purification	Purified by affinity chromatography
Conjugation	Unconjugated

Note

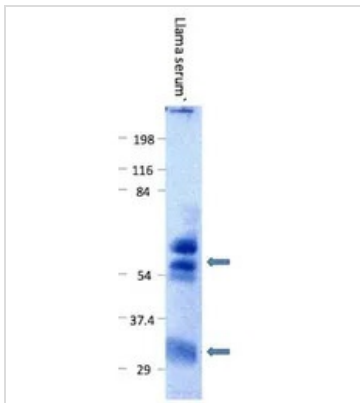
For laboratory research use only. Not for any clinical, therapeutic, or diagnostic use in humans or animals. Not for animal or human consumption.

Purchasers shall not, and agree not to enable third parties to, analyze, copy, reverse engineer or otherwise attempt to determine the structure or sequence of the product.



For full product information, images and publications, please visit our [website](#).

DATA IMAGES

**GTX20271 WB Image**

WB analysis of llama serum using GTX20271 Goat Anti-llama IgG antibody. Arrows show activity against llama IgG (heavy chain) at ~59kDa and llama IgG (light chain) at ~32kDa.



For full product information, images and publications, please visit our [website](#).