

Rabbit Anti-Llama IgG (Heavy Chain) antibody

Cat. No. GTX20276

Host	Rabbit
Clonality	Polyclonal
Isotype	IgG
Applications	WB
Reactivity	Llama

Package
1 mg

Applications

Application Note

*Optimal dilutions/concentrations should be determined by the researcher.

Suggested dilution	Recommended dilution
WB	1:6000

Not tested in other applications.

Product Note This antibody recognizes the heavy chain of llama IgG and has minimal cross-reactivity with llama IgG light chain.

Properties

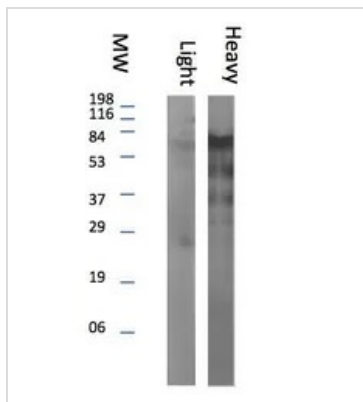
Form	Liquid
Buffer	PBS
Preservative	0.02% Sodium azide
Storage	Store as concentrated solution. Centrifuge briefly prior to opening vial. For short-term storage (1-2 weeks), store at 4°C. For long-term storage, aliquot and store at -20°C or below. Avoid multiple freeze-thaw cycles.
Concentration	Batch dependent (Please refer to the vial label for the specific concentration.)
Immunogen	Llama IgG Heavy Chain
Purification	Purified by affinity chromatography
Conjugation	Unconjugated

Note For laboratory research use only. Not for any clinical, therapeutic, or diagnostic use in humans or animals. Not for animal or human consumption.

Purchasers shall not, and agree not to enable third parties to, analyze, copy, reverse engineer or otherwise attempt to determine the structure or sequence of the product.



For full product information, images and publications, please visit our [website](#).

DATA IMAGES

GTX20276 WB Image

WB analysis of llama IgG light chain (Left) and heavy chain (Right) using GTX20276 Rabbit Anti-llama IgG (Heavy Chain) antibody.

Dilution : 1:250



For full product information, images and publications, please visit our [website](#).