

Rabbit Anti-Mouse IgA antibody [RM220]

Cat. No. GTX20289

Host	Rabbit
Clonality	Monoclonal
Isotype	IgG
Applications	WB, FCM, IP, ELISA
Reactivity	Mouse

References (1)

Package

100 µg

Applications

Application Note

*Optimal dilutions/concentrations should be determined by the researcher.

Suggested dilution	Recommended dilution
WB	0.5 µg/mL - 2 µg/mL
FCM	Assay dependent
IP	Assay dependent
ELISA	0.005 µg/mL - 0.2 µg/mL

Not tested in other applications.

Product Note This antibody reacts to mouse IgA. No cross reactivity with mouse IgG1, IgG2a, IgG2b, IgG2c, IgG3, IgM, IgE, or human IgA.

Properties

Form	Liquid
Buffer	PBS, 1% BSA, 50% Glycerol
Preservative	0.09% Sodium azide
Storage	Store as concentrated solution. Centrifuge briefly prior to opening vial. For short-term storage (1-2 weeks), store at 4°C. For long-term storage, aliquot and store at -20°C or below. Avoid multiple freeze-thaw cycles.
Concentration	Batch dependent (Please refer to the vial label for the specific concentration.)
Immunogen	Mouse IgA
Purification	Protein A purified From tissue culture supernatant
Conjugation	Unconjugated



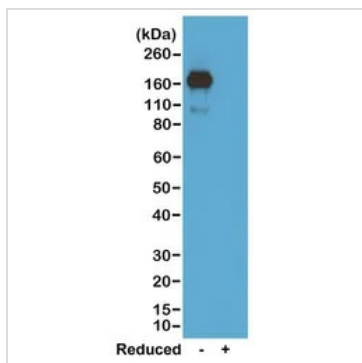
For full product information, images and publications, please visit our [website](#).

For laboratory research use only. Not for any clinical, therapeutic, or diagnostic use in humans or animals. Not for animal or human consumption.

Note

Purchasers shall not, and agree not to enable third parties to, analyze, copy, reverse engineer or otherwise attempt to determine the structure or sequence of the product.

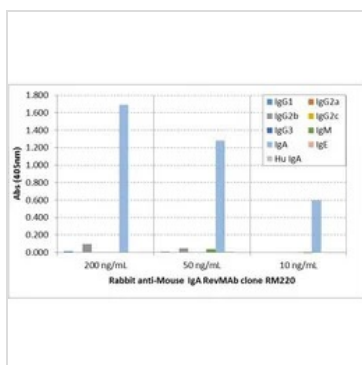
DATA IMAGES



GTX20289 WB Image

WB analysis of nonreduced(-) and reduced(+) mouse IgA using GTX20289 Rabbit Anti-Mouse IgA antibody [RM220].

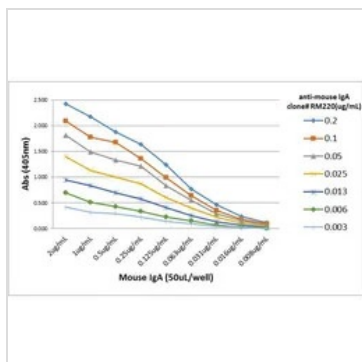
Dilution : 0.5µg/ml



GTX20289 ELISA Image

ELISA analysis of mouse immunoglobulins (50 ng/well) using GTX20289 Rabbit Anti-Mouse IgA antibody [RM220]. No cross reactivity with mouse IgG1, IgG2a, IgG2b, IgG2c, IgG3, IgM, IgE, or human IgA.

Dilution : 200ng/mL, 50 ng/mL, or 10 ng/mL of RM220 was used as the primary antibody.



GTX20289 ELISA Image

ELISA analysis of different amount of immunogen proteins using serial diluted GTX20289 Rabbit Anti-Mouse IgA antibody [RM220].



For full product information, images and publications, please visit our [website](https://www.genetex.com).