

## GFP antibody

**Cat. No. GTX20290**

|                     |  |
|---------------------|--|
| <b>Host</b>         | Rabbit   |
| <b>Clonality</b>    | Polyclonal   |
| <b>Isotype</b>      | IgG  |
| <b>Applications</b> | WB, ICC/IF, IHC-P, IHC-Fr, FCM, IP, ELISA, ChIP assay, Gel supershift assays, IHC, IM, IHC (Free Floating) |
| <b>Reactivity</b>   | Species independent  |

References ( 21 )

Package

50 µl

## Applications

**Application Note**

\*Optimal dilutions/concentrations should be determined by the researcher.

| Suggested dilution    | Recommended dilution |
|-----------------------|----------------------|
| WB                    | Assay dependent      |
| ICC/IF                | Assay dependent      |
| IHC-P                 | Assay dependent      |
| IHC-Fr                | Assay dependent      |
| FCM                   | Assay dependent      |
| IP                    | Assay dependent      |
| ELISA                 | Assay dependent      |
| ChIP assay            | Assay dependent      |
| Gel supershift assays | Assay dependent      |
| IHC                   | Assay dependent      |
| IM                    | Assay dependent      |
| IHC (Free Floating)   | Assay dependent      |

Not tested in other applications.

**Product Note** Reactive against all variants of Aequorea victoria GFP such as S65T-GFP, RS-GFP, YFP and EGFP.

## Properties

|                     |  |
|---------------------|--|
| <b>Form</b>         | Liquid   |
| <b>Buffer</b>       | Serum  |
| <b>Preservative</b> | 0.01% Thimerosal   |
| <b>Storage</b>      | Store as concentrated solution. Centrifuge briefly prior to opening vial. For short-term storage (1-2 weeks), store at 4°C. For long-term storage, aliquot and store at -20°C or below. Avoid multiple freeze-thaw cycles. |



For full product information, images and publications, please visit our [website](#).

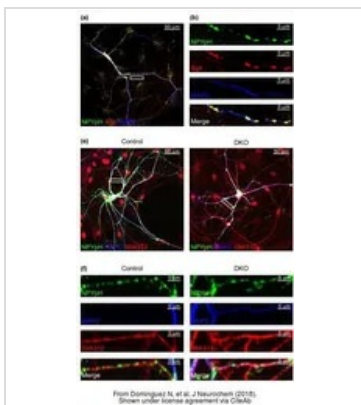
**Immunogen** The GFP was isolated directly from the jellyfish *Aequorea victoria*.

**Purification** Unpurified

**Conjugation** Unconjugated

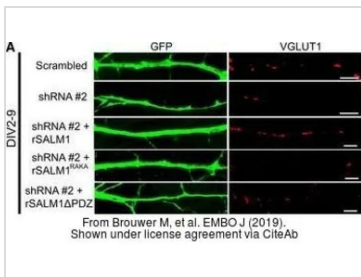
**Note** For laboratory research use only. Not for any clinical, therapeutic, or diagnostic use in humans or animals. Not for animal or human consumption.  
Purchasers shall not, and agree not to enable third parties to, analyze, copy, reverse engineer or otherwise attempt to determine the structure or sequence of the product.

DATA IMAGES



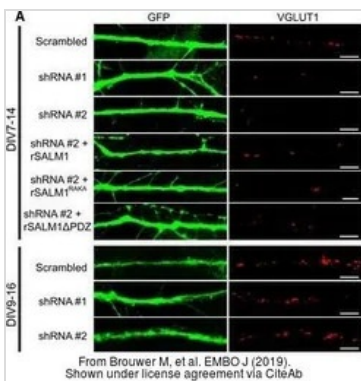
**GTx20290 ICC/IF Image**

The data was published in the journal J Neurochem in 2018. [PMID: 29178418](https://pubmed.ncbi.nlm.nih.gov/29178418/)



**GTx20290 ICC/IF Image**

The data was published in the journal EMBO J in 2019. [PMID: 31368584](https://pubmed.ncbi.nlm.nih.gov/31368584/)



**GTx20290 ICC/IF Image**

The data was published in the journal EMBO J in 2019. [PMID: 31368584](https://pubmed.ncbi.nlm.nih.gov/31368584/)



For full product information, images and publications, please visit our [website](https://www.genetex.com).