

Rabbit Anti-Mouse IgG (Fc) antibody [RM104]

Cat. No. GTX20295

Host	Rabbit
Clonality	Monoclonal
Isotype	IgG
Applications	WB, FCM, IP, ELISA
Reactivity	Mouse

Package
100 µg

Applications

Application Note

*Optimal dilutions/concentrations should be determined by the researcher.

Suggested dilution	Recommended dilution
WB	0.1 µg/mL - 0.5 µg/mL
FCM	Assay dependent
IP	Assay dependent
ELISA	0.005 µg/mL - 0.2 µg/mL

Not tested in other applications.

Product Note

This antibody reacts to the Fc region of all mouse IgG subclasses. No cross reactivity with mouse IgM, IgA, IgE, human IgG, and rat IgG. It may cross react to goat IgG. The Fc region of RM104 has been engineered to eliminate Fc receptor binding.

Properties

Form	Liquid
Buffer	PBS, 1% BSA, 50% Glycerol
Preservative	0.09% Sodium azide
Storage	Store as concentrated solution. Centrifuge briefly prior to opening vial. For short-term storage (1-2 weeks), store at 4°C. For long-term storage, aliquot and store at -20°C or below. Avoid multiple freeze-thaw cycles.
Concentration	Batch dependent (Please refer to the vial label for the specific concentration.)
Immunogen	Mouse IgG
Purification	Protein A purified From tissue culture supernatant
Conjugation	Unconjugated



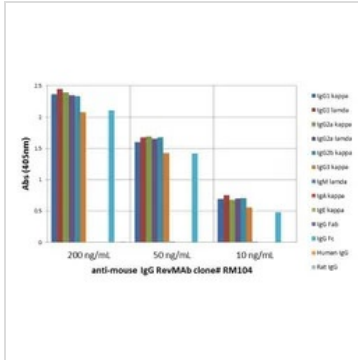
For full product information, images and publications, please visit our [website](#).

For laboratory research use only. Not for any clinical, therapeutic, or diagnostic use in humans or animals. Not for animal or human consumption.

Note

Purchasers shall not, and agree not to enable third parties to, analyze, copy, reverse engineer or otherwise attempt to determine the structure or sequence of the product.

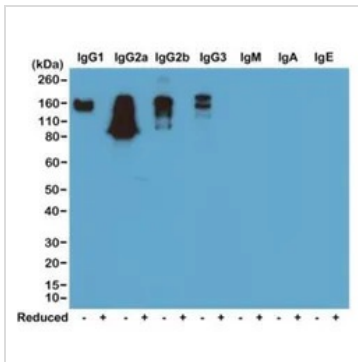
DATA IMAGES



GTX20295 ELISA Image

ELISA analysis of mouse immunoglobulins (50 ng/well) using GTX20295 Rabbit Anti-Mouse IgG (Fc) antibody [RM104]. No cross reactivity with IgM, IgA, IgE, human or rat IgG.

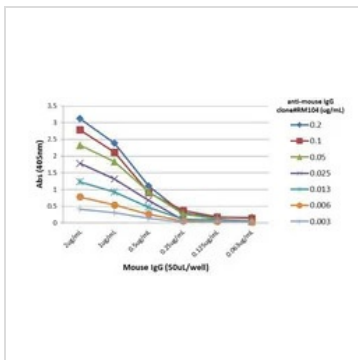
Dilution : 200 ng/mL, 50 ng/mL, or 10 ng/mL of RM104 was used as the primary antibody.



GTX20295 WB Image

WB analysis of nonreduced(-) and reduced(+) mouse immunoglobulins (20ng/lane) using GTX20295 Rabbit Anti-Mouse IgG (Fc) antibody [RM104]. No cross reactivity with IgM, IgA, or IgE.

Dilution : 0.2µg/ml



GTX20295 ELISA Image

ELISA analysis of different amount of immunogen proteins using serial diluted GTX20295 Rabbit Anti-Mouse IgG (Fc) antibody [RM104].



For full product information, images and publications, please visit our [website](https://www.genetex.com).