

M-CSF Receptor antibody

Cat. No. GTX20298

Host	Rabbit
Clonality	Polyclonal
Isotype	IgG
Application	WB, IHC-P
Reactivity	Human

Package
100 µl

APPLICATION

Application Note

WB: 1:500-1:1000, IHC-P: 1:50-1:200

Calculated MW	108 kDa. (Note)
Product Note	c-Fms (N805) pAb detects endogenous levels of c-Fms protein.

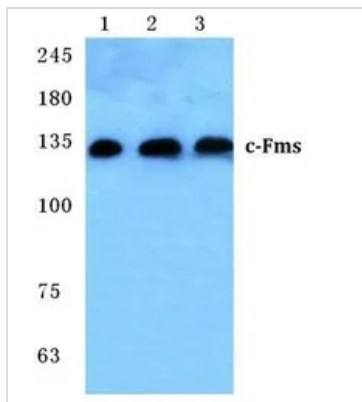
PROPERTIES

Form	Liquid
Buffer	PBS
Preservative	0.05% Sodium azide
Storage	Store as concentrated solution. Centrifuge briefly prior to opening vial. For short-term storage (1-2 weeks), store at 4°C. For long-term storage, aliquot and store at -20°C or below. Avoid multiple freeze-thaw cycles.
Concentration	1 mg/ml (Please refer to the vial label for the specific concentration.)
Immunogen	Synthetic peptide, corresponding to amino acids 771-820 of Human c-Fms.
Purification	The antibody was affinity-purified from rabbit antiserum by affinity-chromatography using epitope-specific immunogen.
Conjugation	Unconjugated
Note	For laboratory research use only. Not for any clinical, therapeutic, or diagnostic use in humans or animals. Not for animal or human consumption. Purchasers shall not, and agree not to enable third parties to, analyze, copy, reverse engineer or otherwise attempt to determine the structure or sequence of the product.



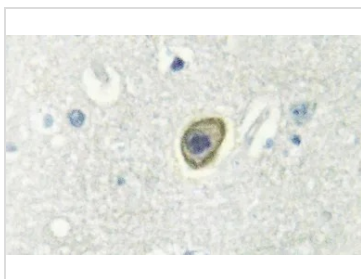
For full product information, images and publications, please visit our [website](#).

DATA IMAGES



GTx20298 WB Image

Western blot (WB) analysis of c-Fms pAb at 1:500 dilution Lane1:MCF-7 cell lysate Lane2:sp2/0 cell lysate Lane3:Rat liver tissue lysate



GTx20298 IHC-P Image

Immunohistochemistry (IHC) analyzes of c-Fms pAb in paraffin-embedded human brain tissue .



For full product information, images and publications, please visit our [website](https://www.genetex.com).