

Collagen II antibody

Cat. No. GTX20300

Host	Rabbit
Clonality	Polyclonal
Isotype	IgG
Applications	WB, ICC/IF, IHC-P, IP, Dot, ELISA, IHC, Multiplexing
Reactivity	Human, Rat, Bovine

References (6)

★★★★★ Review (1)

Package

100 µg

Applications

Application Note

*Optimal dilutions/concentrations should be determined by the researcher.

Suggested dilution	Recommended dilution
WB	1:1000-1:10000
ICC/IF	Assay dependent
IHC-P	1:50-1:400
IP	1:100
Dot	Assay dependent
ELISA	1:5000-1:50000
IHC	Assay dependent
Multiplexing	Assay dependent

Not tested in other applications.

Calculated MW 142 kDa. ([Note](#))

Product Note

Some class specific anti-collagens may be specific for three-dimensional epitopes which may result in diminished reactivity with denatured collagen or formalin-fixed, paraffin embedded tissues. This antibody reacts with most mammalian Type II collagens and has expected cross-reactivity with Type IV and VI and negligible cross reactivity to Type I, III and V collagens.

Properties

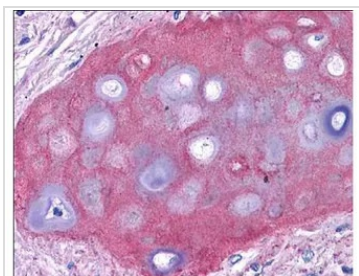
Form	Liquid
Buffer	20mM Potassium Phosphate, 150mM NaCl
Preservative	0.01% Sodium azide
Storage	Store as concentrated solution. Centrifuge briefly prior to opening vial. For short-term storage (1-2 weeks), store at 4°C. For long-term storage, aliquot and store at -20°C or below. Avoid multiple freeze-thaw cycles.
Concentration	1 mg/ml (Please refer to the vial label for the specific concentration.)



For full product information, images and publications, please visit our [website](#).

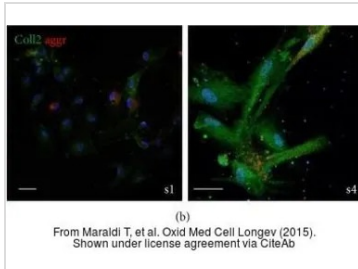
Immunogen	Collagen Type II from human knee cartilage and bovine nasal cartilage.
Purification	Purified by antigen-affinity chromatography. Prepared by immunoaffinity chromatography using immobilized antigens followed by extensive cross-adsorption against other collagens, human serum proteins and non-collagen extracellular matrix proteins to remove any unwanted specificities. This product has been sterile filtered.
Conjugation	Unconjugated
Note	For laboratory research use only. Not for any clinical, therapeutic, or diagnostic use in humans or animals. Not for animal or human consumption. Purchasers shall not, and agree not to enable third parties to, analyze, copy, reverse engineer or otherwise attempt to determine the structure or sequence of the product.

DATA IMAGES



GTx20300 IHC-P Image

GeneTex anti collagen II antibody (GTx20300, 1:400, 45 min RT) showed moderate staining of in FFPE human bronchiolar cartilage (shown in image). Slides were steamed in 0.01 M sodium citrate buffer, pH 6.0 at 99-100°C - 20 minutes for antigen retrieval.



GTx20300 ICC/IF Image

The data was published in the journal Oxid Med Cell Longev in 2015. [PMID: 26273418](https://pubmed.ncbi.nlm.nih.gov/26273418/)



For full product information, images and publications, please visit our [website](https://www.genetex.com).