

PKC delta (phospho Thr507) antibody

Cat. No. GTX20305

Host	Rabbit
Clonality	Polyclonal
Isotype	IgG
Applications	WB
Reactivity	Human

Package
100 µl

Applications

Application Note

WB|1:500-1:1000|空白

Calculated MW 78 kDa. ([Note](#))

Properties

Form	Liquid
Buffer	PBS
Preservative	15mM Sodium azide
Storage	Store as concentrated solution. Centrifuge briefly prior to opening vial. For short-term storage (1-2 weeks), store at 4°C. For long-term storage, aliquot and store at -20°C or below. Avoid multiple freeze-thaw cycles.
Concentration	1 mg/ml (Please refer to the vial label for the specific concentration.)
Immunogen	Synthetic phosphopeptide derived from human PKC δ around the phosphorylation site of Threonine 507.
Purification	Purified by antigen-affinity chromatography From serum
Conjugation	Unconjugated

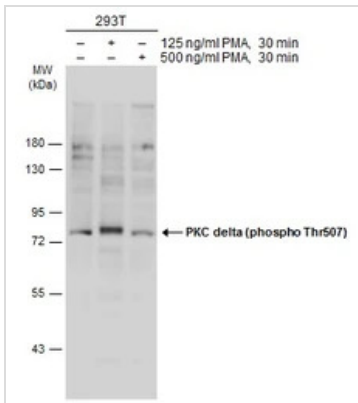
Note

For laboratory research use only. Not for any clinical, therapeutic, or diagnostic use in humans or animals. Not for animal or human consumption.

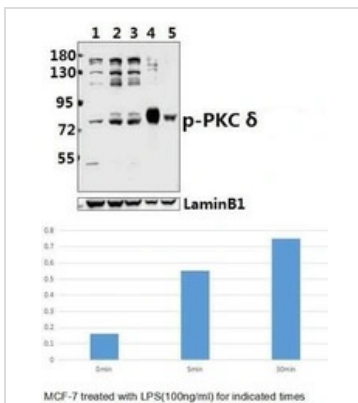
Purchasers shall not, and agree not to enable third parties to, analyze, copy, reverse engineer or otherwise attempt to determine the structure or sequence of the product.



For full product information, images and publications, please visit our [website](#).

DATA IMAGES

GTX20305 WB Image

Untreated (-) and treated (+) 293T whole cell extracts (60 µg) were separated by 7.5% SDS-PAGE, and the membrane was blotted with PKC delta (phospho Thr507) antibody (GTX20305) diluted at 1:1000. The HRP-conjugated anti-rabbit IgG antibody (GTX213110-01) was used to detect the primary antibody.


GTX20305 WB Image

WB analysis of various samples using GTX20305 PKC delta (phospho Thr507) antibody.

Lane1 : MCF-7 whole cell lysate

Lane2 : MCF-7 treated with LPS(100ng/ml) for 5 minutes whole cell lysate

Lane3 : MCF-7 treated with LPS(100ng/ml) for 30 minutes whole cell lysate

Dilution : 1:500



For full product information, images and publications, please visit our [website](https://www.genetex.com).