

## NFkB p65 (acetyl Lys218) antibody

Cat. No. GTX20307

<b>Host</b>	Rabbit
<b>Clonality</b>	Polyclonal
<b>Isotype</b>	IgG
<b>Applications</b>	WB, IHC-P
<b>Reactivity</b>	Human, Mouse

Package  
100 µl

## Applications

## Application Note

\*Optimal dilutions/concentrations should be determined by the researcher.

Suggested dilution	Recommended dilution
WB	1:500-1:2000
IHC-P	1:100-1:300

Not tested in other applications.

**Calculated MW** 60 kDa. ( [Note](#) )

## Properties

<b>Form</b>	Liquid
<b>Buffer</b>	PBS, 0.5% BSA, 50% Glycerol
<b>Preservative</b>	0.02% Sodium azide
<b>Storage</b>	Store as concentrated solution. Centrifuge briefly prior to opening vial. For short-term storage (1-2 weeks), store at 4°C. For long-term storage, aliquot and store at -20°C or below. Avoid multiple freeze-thaw cycles.
<b>Concentration</b>	1 mg/ml (Please refer to the vial label for the specific concentration.)
<b>Immunogen</b>	Synthesized peptide derived from the human NFkappaB-p65 around the acetylation site of K218.
<b>Purification</b>	Purified by antigen-affinity chromatography From serum
<b>Conjugation</b>	Unconjugated

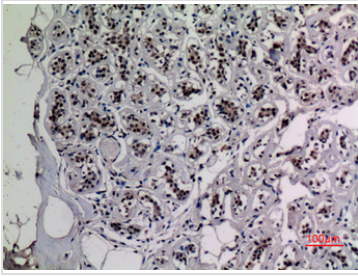
## Note

For laboratory research use only. Not for any clinical, therapeutic, or diagnostic use in humans or animals. Not for animal or human consumption.

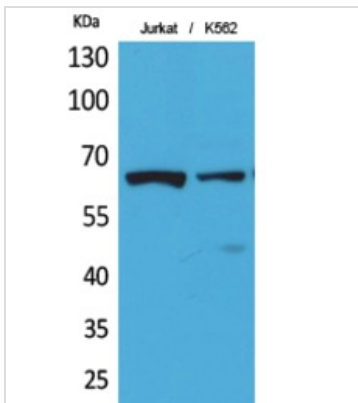
Purchasers shall not, and agree not to enable third parties to, analyze, copy, reverse engineer or otherwise attempt to determine the structure or sequence of the product.



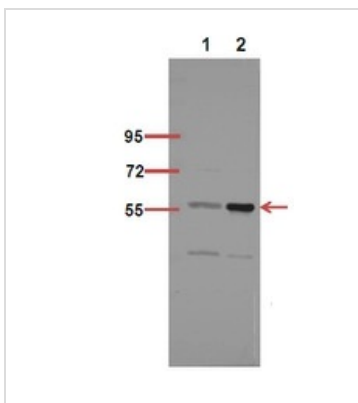
For full product information, images and publications, please visit our [website](#).

**DATA IMAGES**

**GTX20307 IHC-P Image**

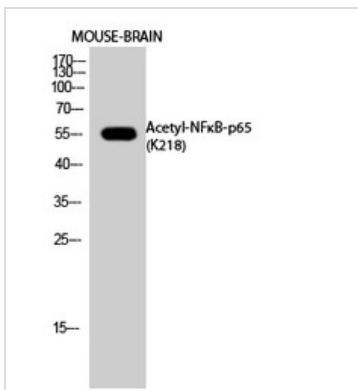
IHC-P analysis of human breast tissue using GTX20307 NFkB p65 (acetyl Lys218) antibody.  
Dilution : 1:100


**GTX20307 IHC-P Image**

IHC-P analysis of human breast tissue using GTX20307 NFkB p65 (acetyl Lys218) antibody.  
Dilution : 1:100


**GTX20307 WB Image**

WB analysis of human breast tissue lysate using GTX20307 NFkB p65 (acetyl Lys218) antibody.  
Dilution : 1:100


**GTX20307 WB Image**

WB analysis of mouse brain cell lysate using GTX20307 NFkB p65 (acetyl Lys218) antibody.



For full product information, images and publications, please visit our [website](https://www.genetex.com).