

Clusterin antibody [Hs-3]

Cat. No. GTX20349

Host	Mouse
Clonality	Monoclonal
Isotype	IgG1
Applications	WB, ICC/IF, IHC-P, ELISA
Reactivity	Human

References (1)

Package

50 µg

Applications

Application Note

*Optimal dilutions/concentrations should be determined by the researcher.

Suggested dilution	Recommended dilution
WB	Assay dependent
ICC/IF	Assay dependent
IHC-P	Assay dependent
ELISA	Assay dependent

Not tested in other applications.

Calculated MW 52 kDa. ([Note](#))

Product Note We do not recommend use of this product for Bovine,Cat,Dog,Pig samples.

Properties

Form	Liquid
Buffer	PBS
Preservative	15mM Sodium azide
Storage	Store as concentrated solution. Centrifuge briefly prior to opening vial. Store at 4°C. DO NOT FREEZE.
Concentration	1 mg/ml (Please refer to the vial label for the specific concentration.)
Immunogen	Freshly ejaculated human sperms were washed in PBS and extracted in 3% acetic acid, 10% glycerol, 30 mM benzaminidine. The acid extract was dialyzed against 0.2% acetic acid and subsequently used for immunization.
Purification	Protein A purified
Conjugation	Unconjugated



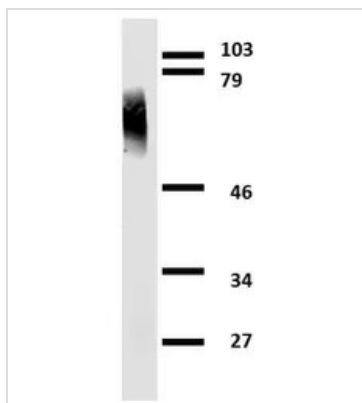
For full product information, images and publications, please visit our [website](#).

For laboratory research use only. Not for any clinical, therapeutic, or diagnostic use in humans or animals. Not for animal or human consumption.

Note

Purchasers shall not, and agree not to enable third parties to, analyze, copy, reverse engineer or otherwise attempt to determine the structure or sequence of the product.

DATA IMAGES



GTX20349 WB Image

WB analysis of human seminal plasma (non-reducing) using GTX20349 Clusterin antibody [Hs-3].



For full product information, images and publications, please visit our [website](#).