

# CDKN2A / p14ARF antibody

**Cat. No. GTX20470**

<b>Host</b>	Rabbit
<b>Clonality</b>	Polyclonal
<b>Isotype</b>	IgG
<b>Applications</b>	WB, ICC/IF, IHC-P, IHC-Fr, FCM, IP, ELISA
<b>Reactivity</b>	Human, Mouse

**Package**  
100 µl

## Applications

### Application Note

\*Optimal dilutions/concentrations should be determined by the researcher.

Suggested dilution	Recommended dilution
WB	1:100 - 1:2000
ICC/IF	1:50 - 1:200
IHC-P	1:10 - 1:500
IHC-Fr	1:10 - 1:500
FCM	1:400
IP	Assay dependent
ELISA	1:100 - 1:2000

Not tested in other applications.

## Properties

<b>Form</b>	Liquid
<b>Buffer</b>	PBS
<b>Preservative</b>	0.05% Sodium azide
<b>Storage</b>	Store as concentrated solution. Centrifuge briefly prior to opening vial. For short-term storage (1-2 weeks), store at 4°C. For long-term storage, aliquot and store at -20°C or below. Avoid multiple freeze-thaw cycles.
<b>Concentration</b>	1 mg/ml (Please refer to the vial label for the specific concentration.)
<b>Immunogen</b>	A synthetic peptide made to a portion of human p14ARF (between residues 50-150). [Swiss-Prot# Q8N726]
<b>Purification</b>	Purified by antigen-affinity chromatography
<b>Conjugation</b>	Unconjugated



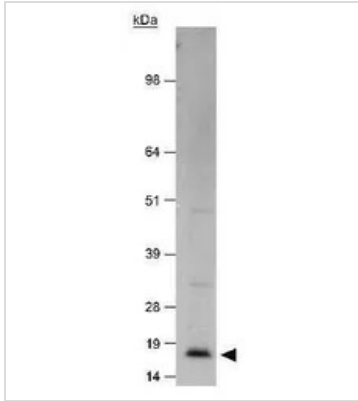
For full product information, images and publications, please visit our [website](#).

For laboratory research use only. Not for any clinical, therapeutic, or diagnostic use in humans or animals. Not for animal or human consumption.

## Note

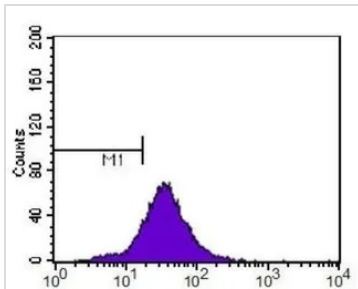
Purchasers shall not, and agree not to enable third parties to, analyze, copy, reverse engineer or otherwise attempt to determine the structure or sequence of the product.

## DATA IMAGES



### GTx20470 WB Image

WB analysis of HeLa cell lysate using GTx20470 CDKN2A / p14ARF antibody.

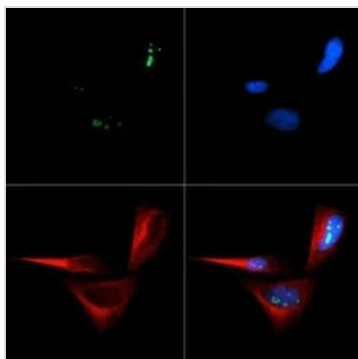


### GTx20470 FCM Image

FACS analysis of HeLa cells using GTx20470 CDKN2A / p14ARF antibody. M1 is defined by unstained cells.

Purple : primary antibody

Dilution : 1:400



### GTx20470 ICC/IF Image

ICC/IF analysis of HeLa cells using GTx20470 CDKN2A / p14ARF antibody.

Green : primary antibody

Red : Tubulin

Blue : DAPI



For full product information, images and publications, please visit our [website](#).