

## Firefly Luciferase antibody

**Cat. No. GTX20498**

<b>Host</b>	Goat
<b>Clonality</b>	Polyclonal
<b>Isotype</b>	IgG
<b>Applications</b>	WB, ICC/IF, ELISA, IHC
<b>Reactivity</b>	Firefly

**Package**  
500 µg

## Applications

**Application Note**

\*Optimal dilutions/concentrations should be determined by the researcher.

Suggested dilution	Recommended dilution
WB	Assay dependent
ICC/IF	Assay dependent
ELISA	Assay dependent
IHC	Assay dependent

Not tested in other applications.

**Product Note**

Assay by immunoelectrophoresis resulted in a single precipitin arc against anti-Goat Serum as well as purified and partially purified Luciferase [*Photinus pyralis* (Firefly)]. No reactivity is observed against Sea pansy (*Renilla reniformis*) luciferase.

## Properties

<b>Form</b>	Liquid
<b>Buffer</b>	20mM Potassium Phosphate, 150mM NaCl
<b>Preservative</b>	0.01% Sodium azide
<b>Storage</b>	Store as concentrated solution. Centrifuge briefly prior to opening vial. For short-term storage (1-2 weeks), store at 4°C. For long-term storage, aliquot and store at -20°C or below. Avoid multiple freeze-thaw cycles.
<b>Concentration</b>	10 mg/ml (Please refer to the vial label for the specific concentration.)
<b>Immunogen</b>	Luciferase [ <i>Photinus pyralis</i> (Firefly)]
<b>Purification</b>	IgG fraction From polyclonal serum
<b>Conjugation</b>	Unconjugated



For full product information, images and publications, please visit our [website](#).

For laboratory research use only. Not for any clinical, therapeutic, or diagnostic use in humans or animals. Not for animal or human consumption.

**Note**

Purchasers shall not, and agree not to enable third parties to, analyze, copy, reverse engineer or otherwise attempt to determine the structure or sequence of the product.

## DATA IMAGES

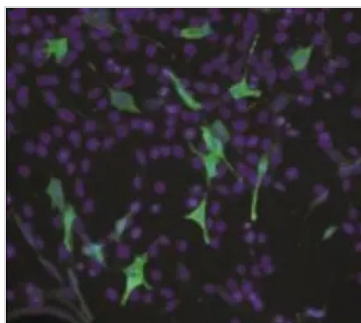
**GTX20498 ICC/IF Image**

Figure 1. Immunofluorescence microscopy. NIH3T3 cells transiently transfected with a luciferase gene. Luciferase-positive cells were detected using 20 µg/ml of GeneTex's polyclonal Anti-Luciferase antibody (GTX20498) followed by 1:200 dilution of anti-goat IgG-FITC (green). Cells were mounted using Vectashield with DAPI (blue) and visualized at 200X magnification.



For full product information, images and publications, please visit our [website](#).