

CD18 antibody [MEM-48]

Cat. No. GTX20657

Host	Mouse
Clonality	Monoclonal
Isotype	IgG1
Applications	WB, IHC-P, IHC-Fr, FCM, IP, Blocking
Reactivity	Human, Mouse

References (2)

Package

100 µg

Applications

Application Note

*Optimal dilutions/concentrations should be determined by the researcher.

Suggested dilution	Recommended dilution
WB	Assay dependent
IHC-P	Assay dependent
IHC-Fr	Assay dependent
FCM	Assay dependent
IP	Assay dependent
Blocking	Assay dependent

Not tested in other applications.

Calculated MW 85 kDa. ([Note](#))

Product Note This antibody recognizes an epitope involving residues 534-546 in cysteine-rich repeat 3 of the CD18 antigen (integrin beta2 subunit; beta2 integrin).
We do not recommend use of this product for Dog samples.

Properties

Form	Liquid
Buffer	PBS
Preservative	15mM Sodium azide
Storage	Store as concentrated solution. Centrifuge briefly prior to opening vial. Store at 4°C. DO NOT FREEZE.
Concentration	1 mg/ml (Please refer to the vial label for the specific concentration.)
Immunogen	Leukocytes of a patient suffering from a LGL-type leukemia.
Purification	Protein A purified



For full product information, images and publications, please visit our [website](#).

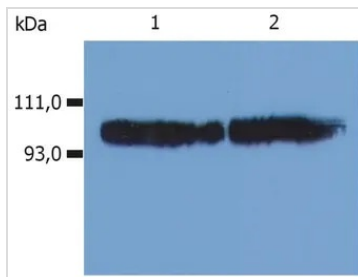
Conjugation

Unconjugated

Note

For laboratory research use only. Not for any clinical, therapeutic, or diagnostic use in humans or animals. Not for animal or human consumption.

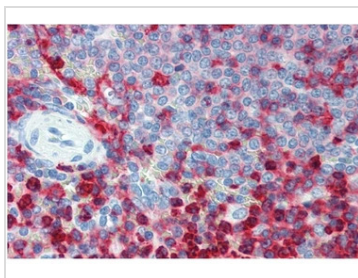
Purchasers shall not, and agree not to enable third parties to, analyze, copy, reverse engineer or otherwise attempt to determine the structure or sequence of the product.

DATA IMAGES

GTX20657 WB Image

WB analysis of various samples (non-reducing) using GTX20657 CD18 antibody [MEM-48].

Lane 1 : KG-1a cell lysate

Lane 2 : HPB-ALL cell lysate


GTX20657 IHC-P Image

IHC-P analysis of human spleen tissue using GTX20657 CD18 antibody [MEM-48].



For full product information, images and publications, please visit our [website](https://www.genetex.com).