

CD10 antibody [MEM-78]

Cat. No. GTX20659

Host	Mouse
Clonality	Monoclonal
Isotype	IgG1
Applications	FCM, IP
Reactivity	Human

References (1)

Package

100 µg

Applications

Application Note

*Optimal dilutions/concentrations should be determined by the researcher.

Suggested dilution	Recommended dilution
FCM	Assay dependent
IP	Assay dependent

Not tested in other applications.

Properties

Form	Liquid
Buffer	PBS
Preservative	15mM Sodium azide
Storage	Store as concentrated solution. Centrifuge briefly prior to opening vial. Store at 4°C. DO NOT FREEZE.
Concentration	1 mg/ml (Please refer to the vial label for the specific concentration.)
Immunogen	NALM-6 human pre-B cell line
Purification	Protein A purified
Conjugation	Unconjugated

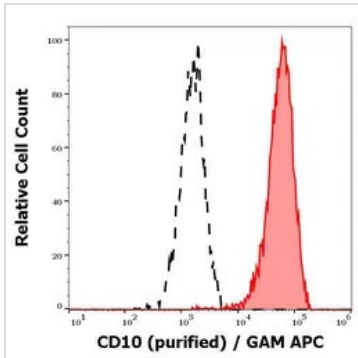
Note

For laboratory research use only. Not for any clinical, therapeutic, or diagnostic use in humans or animals. Not for animal or human consumption.

Purchasers shall not, and agree not to enable third parties to, analyze, copy, reverse engineer or otherwise attempt to determine the structure or sequence of the product.



For full product information, images and publications, please visit our [website](#).

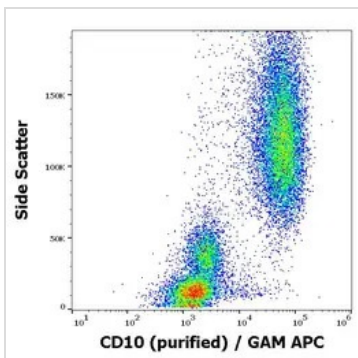
DATA IMAGES

GTX20659 FCM Image

FACS analysis of various samples using GTX20659 CD10 antibody [MEM-78].

Red-filled : Human neutrophil granulocytes

Black dashed : Human CD10 negative lymphocytes

Dilution : 1 µg/mL


GTX20659 FCM Image

FACS analysis of human peripheral whole blood cells using GTX20659 CD10 antibody [MEM-78].

Dilution : 1 µg/mL



For full product information, images and publications, please visit our [website](https://www.genetex.com).