

Cytokeratin 7 + 17 antibody [C-46]

Cat. No. GTX20670

Host	Mouse
Clonality	Monoclonal
Isotype	IgG1
Applications	WB, ICC/IF, IHC-P, IP
Reactivity	Human, Bovine, Pig

Package
100 µg

Applications

Application Note

*Optimal dilutions/concentrations should be determined by the researcher.

Suggested dilution	Recommended dilution
WB	Assay dependent
ICC/IF	Assay dependent
IHC-P	Assay dependent
IP	Assay dependent

Not tested in other applications.

Product Note We do not recommend use of this product for Mouse,Rat,Rabbit samples.

Properties

Form	Liquid
Buffer	PBS
Preservative	15mM Sodium azide
Storage	Store as concentrated solution. Centrifuge briefly prior to opening vial. Store at 4°C. DO NOT FREEZE.
Concentration	1 mg/ml (Please refer to the vial label for the specific concentration.)
Immunogen	Cytoskeleton preparation of HeLa human cervix carcinoma cell line.
Purification	Protein A purified
Conjugation	Unconjugated

Note

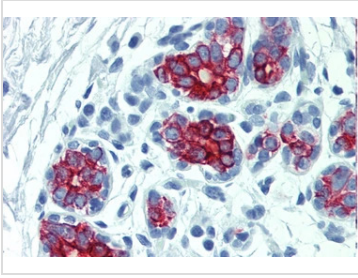
For laboratory research use only. Not for any clinical, therapeutic, or diagnostic use in humans or animals. Not for animal or human consumption.

Purchasers shall not, and agree not to enable third parties to, analyze, copy, reverse engineer or otherwise attempt to determine the structure or sequence of the product.

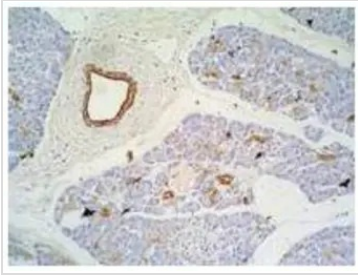


For full product information, images and publications, please visit our [website](#).

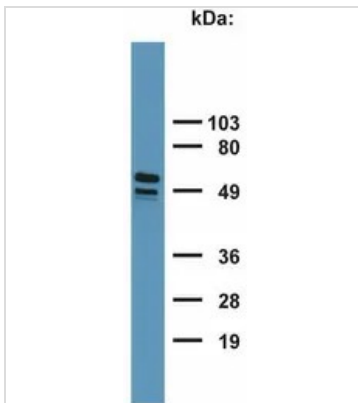
DATA IMAGES

**GTX20670 IHC-P Image**

IHC-P analysis of human breast tissue using GTX20670 Cytokeratin 7 + 17 antibody [C-46].

**GTX20670 IHC-P Image**

IHC-P analysis of pancreas tissue using GTX20670 Cytokeratin 7 + 17 antibody [C-46].

**GTX20670 WB Image**

WB analysis of HeLa cell lysate using GTX20670 Cytokeratin 7 + 17 antibody [C-46].



For full product information, images and publications, please visit our [website](#).