

Serum Amyloid A antibody [115]

Cat. No. GTX20687

Host	Mouse
Clonality	Monoclonal
Isotype	IgG1
Applications	WB, IHC-P, ELISA
Reactivity	Human

References (3)

Package

100 µg

Applications

Application Note

For ELISA: Use at a concentration of 0.3 µg/ml. For WB: Use at a concentration of 0.1-0.5 µg/ml. Optimal dilutions/concentrations should be determined by the researcher.

Product Note

Reacts with natural and recombinant human Serum Amyloid A (SAA) and does not cross-react with other human cytokines or growth factors tested such as IL-1beta, IL-8, MCAF, TGF-beta and EGF. KO/KD validation is based on published data (PMID: 29603594).

Properties

Form	Liquid
Buffer	PBS
Preservative	No preservatives
Storage	Store as concentrated solution. Centrifuge briefly prior to opening vial. For short-term storage (1-2 weeks), store at 4°C. For long-term storage, aliquot and store at -20°C or below. Avoid multiple freeze-thaw cycles.
Concentration	0.5 mg/ml (Please refer to the vial label for the specific concentration.)
Immunogen	Highly purified recombinant human serum amyloid A (MW: 12 kDa)
Purification	Protein G affinity purified
Conjugation	Unconjugated

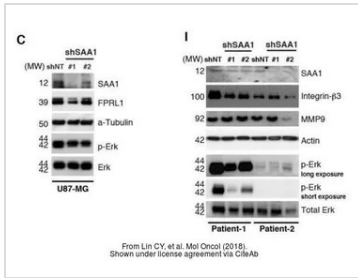
Note

For laboratory research use only. Not for any clinical, therapeutic, or diagnostic use in humans or animals. Not for animal or human consumption.

Purchasers shall not, and agree not to enable third parties to, analyze, copy, reverse engineer or otherwise attempt to determine the structure or sequence of the product.



For full product information, images and publications, please visit our [website](#).

DATA IMAGES

GTX20687 WB Image

The data was published in the journal Mol Oncol in 2018. [PMID: 29603594](https://pubmed.ncbi.nlm.nih.gov/29603594/)



For full product information, images and publications, please visit our [website](https://www.genetex.com).