

Bcl-2 antibody [124]

Cat. No. GTX20694

Host	Mouse
Clonality	Monoclonal
Isotype	IgG1
Application	WB, IHC-P, IHC-Fr, IP
Reactivity	Human

Package
250 µl

APPLICATION

Application Note

*Optimal dilutions/concentrations should be determined by the researcher.

Suggested dilution	Recommended dilution
WB	Assay dependent
IHC-P	Assay dependent
IHC-Fr	Assay dependent
IP	Assay dependent

Not tested in other applications.

Calculated MW 26 kDa. ([Note](#))

PROPERTIES

Form	Liquid
Buffer	Tissue culture supernatant
Preservative	0.09% Sodium azide
Storage	Store as concentrated solution. Centrifuge briefly prior to opening vial. Store at 4°C.
Immunogen	Recombinant Bcl-2 peptide sequence comprising 41 - 54 amino acids of Bcl-2 oncoprotein.
Purification	Unpurified
Conjugation	Unconjugated

Note

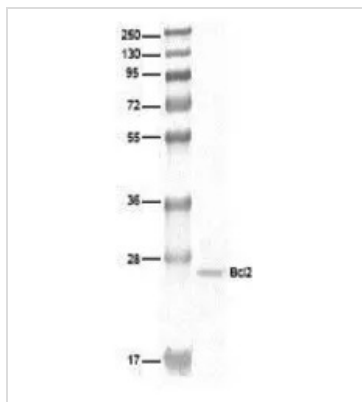
For laboratory research use only. Not for any clinical, therapeutic, or diagnostic use in humans or animals. Not for animal or human consumption.

Purchasers shall not, and agree not to enable third parties to, analyze, copy, reverse engineer or otherwise attempt to determine the structure or sequence of the product.



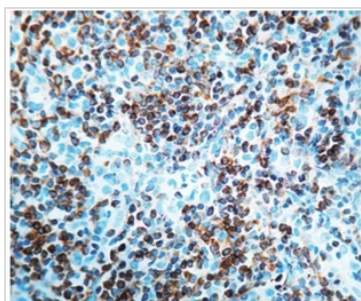
For full product information, images and publications, please visit our [website](#).

DATA IMAGES



GTX20694 WB Image

Western blot analysis of human lung cell extract with Bcl2, (GTX20694) Antibody.



GTX20694 IHC-P Image

Formalin fixed paraffin embedded human tonsil stained with GTX20694.



For full product information, images and publications, please visit our [website](#).