

## TRPM7 antibody

Cat. No. GTX20729

Host	Goat
Clonality	Polyclonal
Isotype	IgG
Applications	WB, IHC-P
Reactivity	Mouse, Rat

References ( 1 )

Package

100 µg

## Applications

## Application Note

\*Optimal dilutions/concentrations should be determined by the researcher.

Suggested dilution	Recommended dilution
WB	Assay dependent
IHC-P	4-6µg/ml

**Note : Mouse Brain shows neuronal staining in the Hippocampus.**

Not tested in other applications.

**Calculated MW** 213 kDa. ( [Note](#) )

## Properties

Form	Liquid
Buffer	TBS, 0.5% BSA
Preservative	0.02% Sodium azide
Storage	Store as concentrated solution. Centrifuge briefly prior to opening vial. For short-term storage (1-2 weeks), store at 4°C. For long-term storage, aliquot and store at -20°C or below. Avoid multiple freeze-thaw cycles.
Concentration	0.50 mg/ml (Please refer to the vial label for the specific concentration.)
Immunogen	Peptide with sequence C-TKESESTNSVRLML, from the C Terminus of the protein sequence according to NP_060142.3.
Purification	Purified by ammonium sulphate precipitation followed by antigen affinity chromatography
Conjugation	Unconjugated

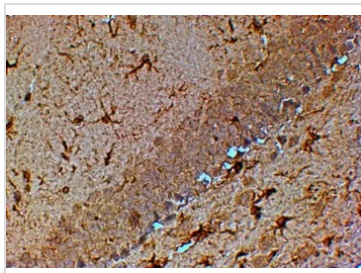
## Note

For laboratory research use only. Not for any clinical, therapeutic, or diagnostic use in humans or animals. Not for animal or human consumption.

Purchasers shall not, and agree not to enable third parties to, analyze, copy, reverse engineer or otherwise attempt to determine the structure or sequence of the product.



For full product information, images and publications, please visit our [website](#).

**DATA IMAGES**

**GTX20729 IHC-P Image**

IHC-P analysis of mouse hippocampus using GTX20729 TRPM7 antibody.

Antigen retrieval : citrate buffer pH 6

Dilution : 4µg/ml



For full product information, images and publications, please visit our [website](#).