

pan Cytokeratin antibody [MNF116]

Cat. No. GTX20756

Host	Mouse
Clonality	Monoclonal
Isotype	IgG1
Applications	IHC-P
Reactivity	Human

References (1)

Package

500 µl

Applications

Application Note

*Optimal dilutions/concentrations should be determined by the researcher.

Suggested dilution	Recommended dilution
IHC-P	1:25-1:50

Not tested in other applications.

Product Note

This antibody recognizes cytokeratin polypeptides ranging from 40 through 58kDa, corresponding to cytokeratins 5, 6, 8, 17 and 19. It shows a broad pattern of reactivity with human epithelial tissues from simple glandular epithelia to stratified squamous epithelia, like epidermis, mammary gland ducts and tracheal epithelium.

Properties

Form	Liquid
Buffer	Tissue culture supernatant
Preservative	0.09% Sodium azide
Storage	Store as concentrated solution. Centrifuge briefly prior to opening vial. Store at 4°C.
Immunogen	BALB/C mice were immunized with crude extract of splenic cells from a nude mouse engrafted with MCF-7 cells.
Purification	Unpurified
Conjugation	Unconjugated

Note

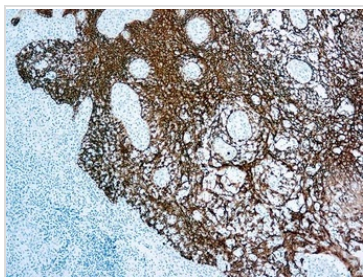
For laboratory research use only. Not for any clinical, therapeutic, or diagnostic use in humans or animals. Not for animal or human consumption.

Purchasers shall not, and agree not to enable third parties to, analyze, copy, reverse engineer or otherwise attempt to determine the structure or sequence of the product.



For full product information, images and publications, please visit our [website](#).

DATA IMAGES



GTX20756 IHC-P Image

IHC-P analysis of human skin tissue using GTX20756 pan Cytokeratin antibody [MNF116].



For full product information, images and publications, please visit our [website](#).